

# DOWNTOWN WICHITA

## Amenities

- [Medical Care](#)
- [Places of Worship](#)
- [Fitness](#)
- [Parks & Plazas](#)

[Everyday Services Interactive Map](#)

[Professional Services Interactive Map](#)

## Medical Care

Wichita and South Central Kansas residents enjoy a high level of expertise and healthcare choice. The city is continuously ranked high in the nation for the quality of healthcare available.

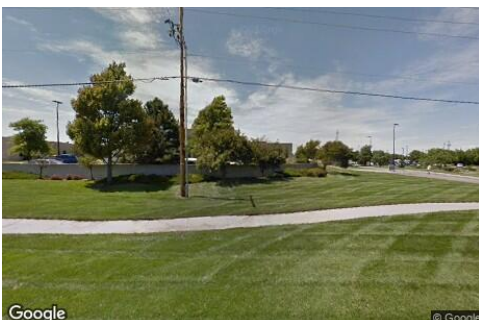
[Medical Care Interactive Map](#)



### **Galichia Heart Hospital**

2610 N. Woodlawn

(316)858-2610

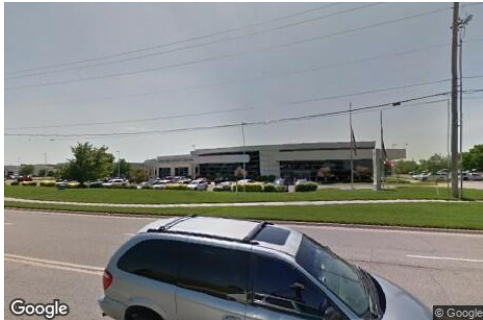


### **Kansas Heart Hospital**

3601 N. Webb Road

(316)630-5000

# DOWNTOWN WICHITA



**Kansas Spine Hospital**  
3333 N. Webb Road

(316)462-5000



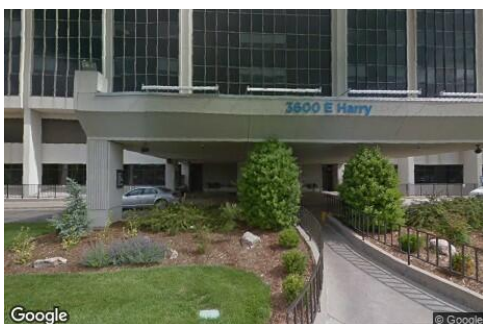
**Kansas Surgery and Recovery Center**  
2770 N. Webb Road

(316) 634-0090



**Via Christi Behavioral Health Center**  
8901 E. Orme Street

(316) 858-0333



**Via Christi Hospital**  
3600 E. Harry Street

(316) 268-5000



# DOWNTOWN WICHITA



**Via Christi Hospital**  
14800 W. St. Teresa

(316) 268-5000



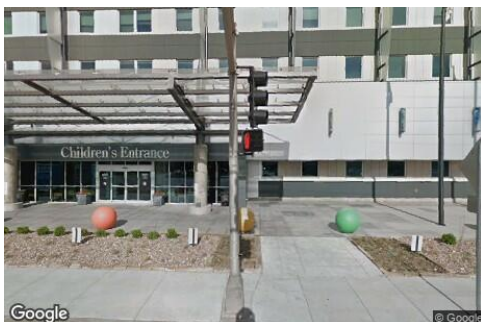
**Via Christi Regional Medical Center**  
929 N. St. Francis Street

(316) 268-5000



**Via Christi Rehabilitation Hospital**  
1151 N. Rock Road

(316) 634-3400



**Wesley Medical Center**  
550 N. Hillside Street

(316) 962-2000

# DOWNTOWN WICHITA



**Wesley Rehabilitation Hospital**  
8338 W. 13th Street North

(316)729-9999

## Places of Worship

Whether you are visiting for a weekend or looking for a church or place of worship to call home, you'll find a place of faith right for you.

[Worship Interactive Map](#)



**Cathedral of the Immaculate Conception**  
430 North Broadway Street

(316) 263-6574  
Churches



**Catholic Diocese of Wichita**  
424 N Broadway St

(316) 269-3900



# DOWNTOWN WICHITA



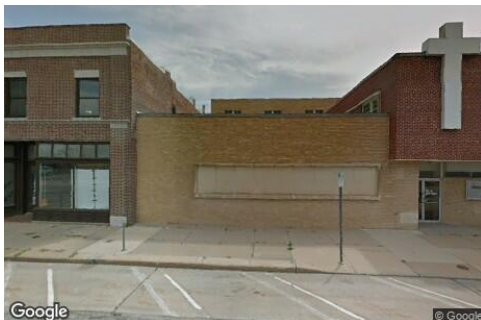
**City Life Church**  
216 East 2nd Street North  
  
(316) 263-5285



**First United Methodist Church**  
330 N Broadway St  
  
(316) 267-6244



**Office of Hispanic Ministry**  
437 N Topeka St  
  
(316) 269-3919



**Rivercrest Free Methodist Community Church**  
136 N. Emporia Avenue  
  
(316) 682-3855

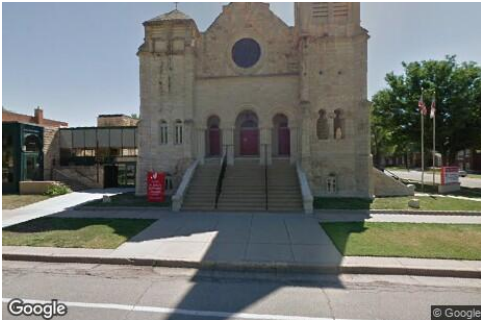
# DOWNTOWN WICHITA



## **Riverwalk Church of Christ**

225 N. Waco Street

(316) 265-9653



## **St. John's Episcopal Church**

402 N. Topeka Street

(316) 262-0897



## **The Source Church**

445 N. Market Street

(316) 530-2513

## Fitness

[Fitness Interactive Map](#)

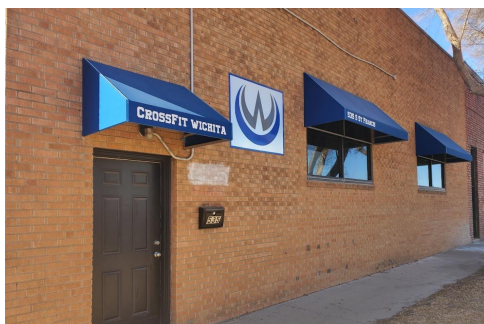


# DOWNTOWN WICHITA



## Biking

There are bike lanes open for public use along First and Second Streets (East/West) and Topeka and Market Streets (North/South). A bicycle repair station is available for public use in front of the Kansas Health Foundation at 309 E. Douglas Avenue. Learn more about local bicycling at [bikewalkwichita.org](http://bikewalkwichita.org).

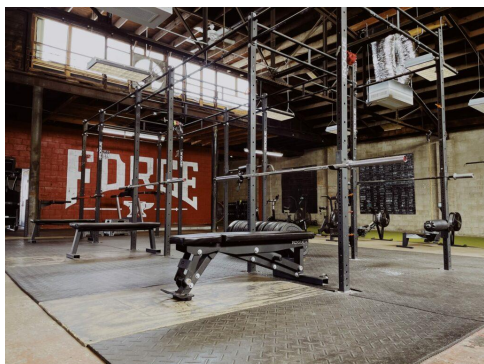


## CrossFit Wichita

535 S. St. Francis Street

(316) 644-6917

A world class fitness center driven by a diverse community of people encouraging each other to become better in fitness. CrossFit Wichita is the first CrossFit facility in the city. The Coaching staff are certified CF-L1, ACE, OPEX, or in USAW weightlifting and are dedicated to ongoing fitness education.



## Forge Fitness

330 North Mosley Street

(316) 519-9813

Forge Fitness is a 24 hour access gym offering membership, personal training, instructor lead classes. They have everything you need for Powerlifting, Strongman, Olympic Weightlifting, Crossfit, sports performance, functional fitness and more.

# DOWNTOWN WICHITA



## **Orangetheory Fitness**

645 East Douglas Avenue

(316) 867-0787

Orangetheory is a 1-hour, full-body heart rate zone and strength training workout that delivers a more personalized experience in a group setting. Designed to be effective and efficient, our workout classes boost your metabolism, burn fat and calories, build strength and confidence, and improve your overall fitness. And these are just some of the results you gain.

Locally owned and located in the heart of downtown, try your first class for free!



## **Robert D. Love YMCA**

402 N. Market Street

(316) 264-9374

Key features of the state of the art work out facility include an 8 lane competition lap pool, full size gymnasiums, five locker rooms, program studios for martial arts, group exercise, yoga, cycling, multiple racquetball/handball courts, an indoor track plus much more. Must be a YMCA member to utilize facility.



## **Wichita Skate Park**

645 S. St. Francis Street

The world-renowned skate park designer, Wally Hollyday, designed Wichita's first public skate park. The park is open from dawn to dusk and is located underneath the Kellogg overpass, directly south of the Commerce Street Arts District.



# DOWNTOWN WICHITA



## **WichitaJiuJitsuClub.com**

449 North Mosley Street

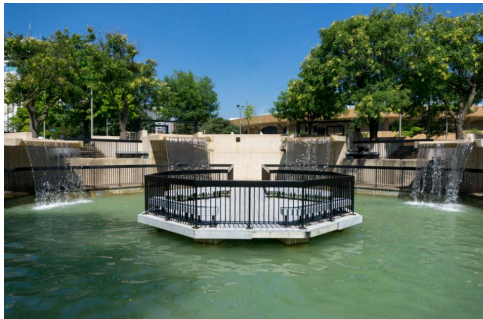
(316) 260-8322

Wichita Jiu Jitsu Club has been dedicated to providing quality martial arts training in the Wichita area since 2010. Their Black Belt Professors are proud members of the Lovato Jiu Jitsu Affiliation under Professor Rafael Lovato Jr. and active members of the Six Blades Jiu Jitsu competition team led by the legendary Sensei Xande Ribeiro.

They offer group classes, private lessons, family rates, and first responder discounts.

## Parks & Plazas

[Parks & Plazas Interactive Map](#)



## **A. Price Woodard Park**

401 W. Douglas Avenue

The park is named after the late A. Price Woodard, Jr., former Mayor of Wichita. It is a multi-level park, accentuated by waterfalls, fountains, pool and an amphitheater. The landscape design for the area ranges from semi-formal in the main plaza adjacent to Douglas Avenue and the Century II Performing Arts & Convention Center, to naturalistic in those areas adjoining the river. Land for this park was acquired in 1972 from the Urban Renewal Agency.



## **Cessna Plaza at INTRUST Bank Arena**

500 E. Waterman Street

Cessna Plaza is located directly in front of and surrounding INTRUST Bank Arena. The landscaped plaza welcomes guests to arena events.



# DOWNTOWN WICHITA



**Chester I. Lewis Reflection Square Park**  
205 E. Douglas Avenue

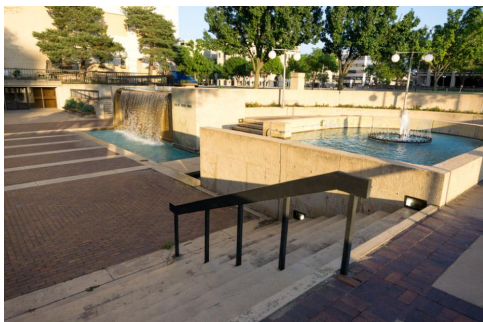
Cost - N/A

The City of Wichita is redesigning an underutilized urban park into a new public gathering place. The improvements to the park will honor the legacy of Chester I. Lewis, the namesake of the park, who was the president of the Wichita chapter of the NAACP and was a leader of the modern civil rights movement at the local, state and national levels.



**Farm & Art Market Plaza**  
835 E. First N. Street

The Farm & Art Market Plaza is located in the heart of the Old Town Entertainment District. The plaza is located directly in front of The Museum of World Treasures on First Street between Mosley and Rock Island Streets. The Old Town Farmers' Market takes place on this plaza every Saturday from 7 a.m. until noon from April through October. Visitors will find locally grown products as well as meat and poultry products raised right here in Kansas. The market also features handmade Artisan goods and prepared food vendors specializing in healthy, high quality products. Learn more at [oldtownfarmersmarket.com](http://oldtownfarmersmarket.com).



**Finlay Ross Park**  
121 W. Douglas Avenue

Complete with benches, pools, waterfalls and fountains, this well landscaped mini-park is a relaxing environment for visitors and workers in the Downtown area. This small half-acre multi-level park was acquired in 1970 from the Urban Renewal Agency. The park is named in memory of one of Wichita's early pioneers who played an important role in the history of the City, Finlay Ross. He served as Mayor of the City of Wichita for three 1-year terms at the turn of the century and was instrumental in obtaining land and river frontage for the Riverside Parks and the park boulevard system.



# DOWNTOWN WICHITA



**Heritage Square Park**  
115 E. William Street

Heritage Square Park was conveyed to the Board of Park Commissioners in May 1978. Located in Downtown directly east of the Wichita Sedgwick County Historical Museum, the small park consists of many plantings of trees, shrubberies and flowers. A gazebo, free-form rock fountain pool and statue add to the turn-of-the-century atmosphere of the park. The Ernest Trova sculpture "Gox #4" was placed in the park and dedicated November 20, 1987. In 2014 the Historical Museum took over as caretaker of the park, and hosts a multitude of museum programming in it.



**Kennedy Plaza**  
225 W. Douglas Avenue

Kennedy Plaza is located in front of Century II and serves as event space. Events that take place on the plaza include the Wichita Mayor's Tree Lighting and concerts during the Wichita Riverfestival.



**Mayor's Pine Grove Park**  
300 N. Water

A small park located in the Downtown area near the Epic Center office building, which serves as a relaxing area for Downtown workers. The park off of Second Street, nestled between Wichita Street and Water Street.



**Naftzger Park & Evergy Pavilion**  
698 E William St

(316) 268-4361  
Naftzger Park is located at the southeast corner of Douglas Avenue and St. Francis Street and features the Evergy Pavilion for live entertainment, an open lawn and LED digital display for events, a dog run, gardens, multiple seating options, art and water features and more. This urban park is surrounded by local shops and restaurants. Find upcoming events at [naftzgerpark.com](http://naftzgerpark.com) and on the Naftzger Park Facebook page.



# DOWNTOWN WICHITA



**Old Town Square**  
353 N. Mead Street

Among the brick-lined streets, historic lampposts and converted brick warehouses dating back to the mid-1800s is Old Town Square. The square is a place to relax and enjoy the Downtown, including green space, benches, lighting and fountains. Local retailers and restaurants surround the square. In the summer families can enjoy the splash fountains.



**Union Station Plaza**  
701 E. Douglas Avenue

(316) 262-3331  
The historic Union Station Plaza has been restored and now serves as a welcoming entry to the terminal building. The plaza can be used for outdoor events and activities, and also features kiosks with full kitchens available for food and drink service.



**Wichita Skate Park**  
645 S. St. Francis Street

The world-renowned skate park designer, Wally Hollyday, designed Wichita's first public skate park. The park is open from dawn to dusk and is located underneath the Kellogg overpass, directly south of the Commerce Street Arts District.