

# DOWNTOWN WICHITA

## Window Wonderland

Congratulations to the winners of this year's Downtown Wichita Window Wonderland holiday window decorating contest:

### First: The Leprechaun's Lab



### Second: Wizard's Alley



### Third: Left on Read

# DOWNTOWN WICHITA



Left On Read, 612 E. Douglas Ave.

A huge thank you to all the businesses that took part and brought holiday cheer to the heart of downtown

The Window Wonderland promotion and prize eligibility are limited to businesses located within Downtown Wichita's SSMID boundaries: from the Arkansas River east to Washington Avenue, and from Kellogg north to Central Street.

## Windows on Display

[Window Decorating Contest Interactive Map](#)



### **AC Hotel Wichita Downtown**

105 South Broadway

(316) 542-5310

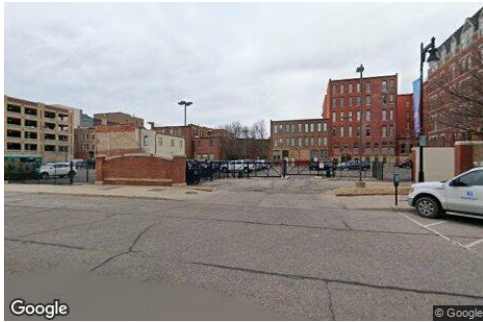
# DOWNTOWN WICHITA



## Architect Counseling Center

622 East Douglas Avenue

(316) 282-3444



## Eaton Place

517 East Douglas Avenue

(316) 712-0713



## Eric Fisher Studio

645 East Douglas Avenue

(316) 358-0333



## Great Plains Transportation Museum

700 East Douglas Avenue

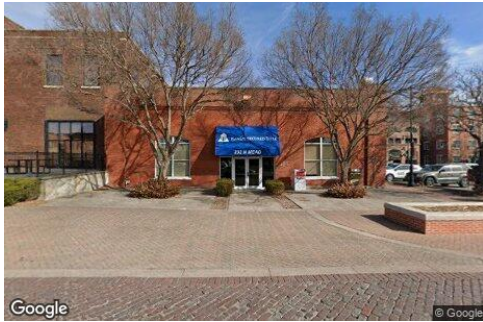
(316) 263-0944

# DOWNTOWN WICHITA



**Greyten Architecture + Interior Design**  
920 East 1st Street North

(316) 440-0865



**Kansas Secured Title**  
232 N. Mead

(316) 251-6103



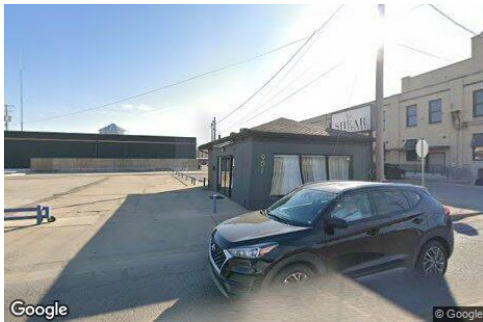
**Karl's Downtown Inc**  
401 South Market Street

(316) 264-5385

# DOWNTOWN WICHITA



**Old Mill Tasty Shop**  
604 East Douglas Avenue  
(316) 264-6500



**Reta's Wax Room**  
901 East Central Avenue  
(316) 650-0144



**Skin Is In Studios**  
104 Saint Francis  
(316) 351-8070

# DOWNTOWN WICHITA



**The Leprechaun's Lab**  
630 East Douglas Avenue  
(307) 351-0229



**Viva La Olive**  
300 North Mead Street  
(316) 477-3005



**Wasabi Hinkaku**  
912 East Douglas Avenue  
(316) 927-3524



**Wizard's Alley**  
114 North Saint Francis Avenue  
(316) 262-6642