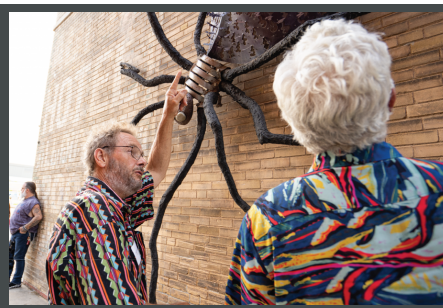
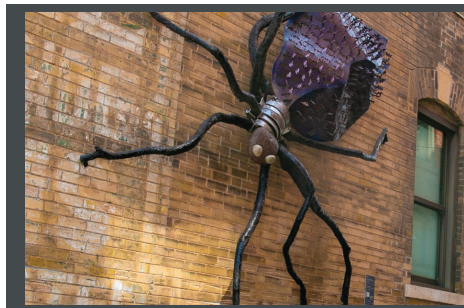


DOWNTOWN WICHITA

Machine-Nature Interface 88 (Arachnid), 2017

Machine-Nature Interface 88 (Arachnid) features two large, mix-medium spiders crawling down the side of the Renfro building. They have Osage orange tree limbs for legs, coppered-screened thoraxes, painted boulders for heads, and smooth rocks for eyes. At night each spider is lit from the inside, which can be seen from Douglas Avenue.

Each spider has its own unique kinetic or interactive feature. The top mounted spider, installed in 2022, is connected to a wire that when pulled waves one of its eight arms. Sylvania, who sits at eye level, vibrates and moves with the movement of the Kansas wind.



[Audio Description](#)

Mike Miller, Artist

Mike Miller is best known for his Machine-Nature Interface sculptures. The majority of his work is kinetic, and can be powered by anything from a motor and salvaged gears to the wind. Miller was born, raised and educated in Kansas and finds inspiration and materials for both the machine and the nature aspects of his work around his home and studio in rural Butler County. Learn more at mikemillersculpture.com.