

# DOWNTOWN WICHITA

## Under Construction Development Projects

- [Development Projects Map](#)
- [Residential Projects Map](#)

### [Under Construction Interactive Map](#)



#### **Broadway Plaza AC Marriott Hotel** 105 S. Broadway

Cost Total: N/A

The historic Broadway Plaza, located at the southwest corner of Douglas Avenue and Broadway Street, is currently being renovated into an AC Marriott Hotel featuring 118 rooms. The Developer plans to blend modern aesthetics with the building's unique, historic elements. The 11-story hotel will feature a ground-floor bar that will be open to the public and a covered entryway for valet parking.



#### **Commerce and St. Francis Street Improvements** Both Commerce and St. Francis Streets

Cost - N/A.

Proposed streetscape improvements include upgrading utility and drainage infrastructure, refurbishing the existing brick streets and the further definition of parking and drive lanes, all while still preserving the character of the Commerce Street Arts District. Artists will be engaged to ensure street amenities, lighting and other design elements including entry monuments reflecting the unique character of the arts district.

# DOWNTOWN WICHITA



## **Exploration Place: Amphitheater & Destination Playscape**

300 North Mc Lean Boulevard

(316) 660-0600

Cost - \$25 million

Exploration Place is preparing to break ground on a fully funded amphitheater on the northwest side of the property featuring seating adjacent to the Arkansas River path, landscape lighting and more.

The family-friendly learning center has also planned a multimillion-dollar outdoor expansion — a \$17-million playscape, described as a new generation of playground with a theme-park feel for all ages.

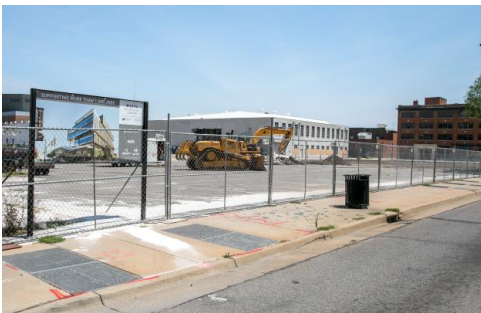


## **Sutton Housing (student housing)**

209 E. William St.

The Sutton Place building will be renovated into student housing to complement the Kansas Health Science Center - Kansas College of Osteopathic Medicine (KHSC-KansasCom). The project adds additional housing options for students and is connected to the medical school via skywalk.

The KHSC-KansasCom project is the catalyst for the renovation of five historic buildings that will create a vibrant environment along the William Street corridor, directly south of Douglas Avenue.



## **Wichita Biomedical Campus**

The estimated \$302 million campus, a partnership between Wichita State University (WSU), the University of Kansas (KU) and WSU Tech will transform Wichita's downtown into a prominent center for cutting-edge research, advanced medical technologies, and high-value job opportunities. The campus will bring an influx of 3,000 students and 200 faculty and staff members downtown, driving increased foot traffic for local businesses, restaurants, bars and retail establishments.

# DOWNTOWN WICHITA



## **Wichita Transit Multi-Modal Facility** 217 S Sycamore St

Cost - N/A

The City of Wichita plans to build a multimodal facility and parking garage just west of Riverfront Stadium in Delano. The new terminal and transit hub for city buses and shuttles would replace the current terminal and would feature 12-bus bays, ticketing windows, a security office, lobby, staff offices, bicycle and scooter parking, and a 400-vehicle parking garage.