

# DOWNTOWN WICHITA

## Bigfoot Brian: The Winter Birdwatcher

Be swept away into a magical fantasyland at the southwest corner of Douglas Avenue and Emporia Street, where local artists Hallie Linnebur and Meghan Miller have created whimsical, colorful art installation featuring our friend Bigfoot Brian. Bring the entire family to join Bigfoot Brian in his winter birdwatching quest. Explore each intricate display to find hidden treasures in a game of "I Spy." The installation will be up through January 2021.



[Invite friends on Facebook](#)



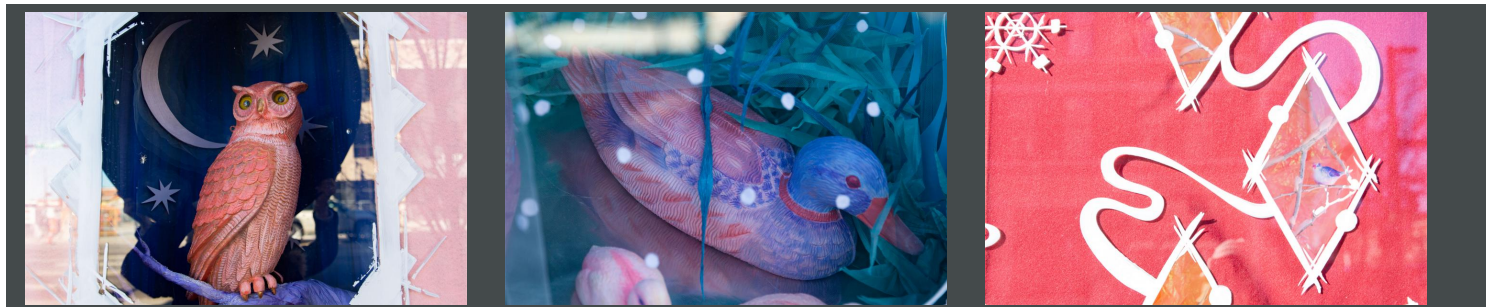
# DOWNTOWN WICHITA





# DOWNTOWN WICHITA

[Download "I Spy" Game](#)



While you're downtown, grab a warm cup of coffee, delectable dessert or a delicious meal from a [local restaurant](#) and get all your holiday shopping done at one of our many unique [local shops](#). [Learn more and find holiday festivities](#).

Make sure to post photos using [#BigfootBrian](#) and [#DowntownWichita](#) and follow us on [Facebook](#), [Twitter](#) and [Instagram](#) for updates on Brian's whereabouts.



## About the Artists

[Linnebur & Miller](#) (Hallie Linnebur and Meghan Miller) are a Wichita-based art duo specializing in whimsical and dreamy installation and participatory art. Their works are slices of other worlds that appear for a time to transform spaces into colorful fantasy scapes.





# DOWNTOWN WICHITA