



The Wichita River Corridor Improvement Project

Presented by

LAW/KINGDON, INC.

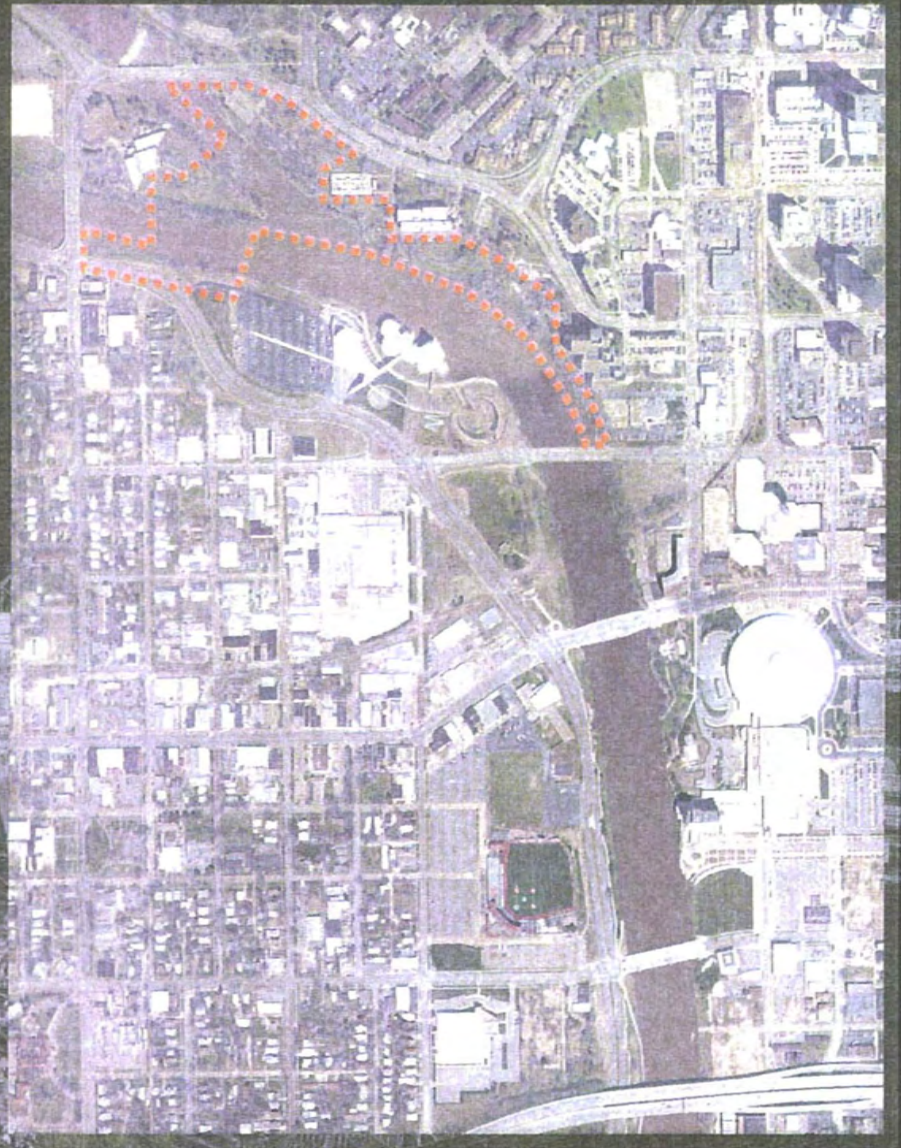
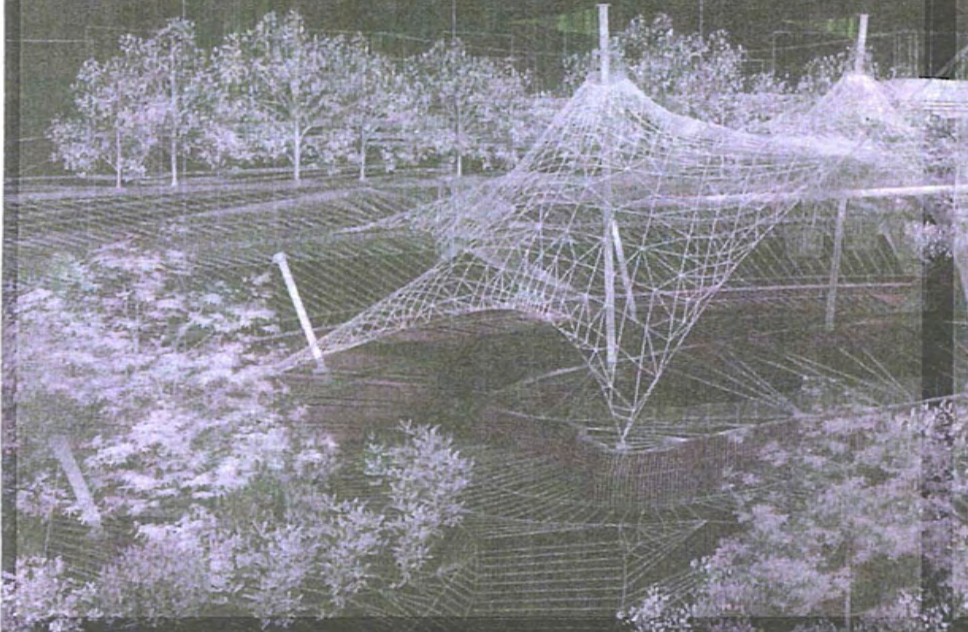
Architects • Engineers • Planners • Landscape Architects

In Collaboration with:

Lawrence & Associates • West of Dead • Greenman Group

THE KEEPER SEGMENT

- KEEPER PLAZA
- PEDESTRIAN BRIDGES
- PLAZAS & OVERLOOKS



EDAW * Wilson & Company * Rock 'N' Steel * Greteman Group * Vicki Scuri - Siteworks * HHPA, Inc. * McClelland Sound, Inc. * HNTB * Special Effects Unlimited, Inc.



WICHITA RIVER
CORRIDOR
IMPROVEMENT
PROJECT

PROJECT SUMMARY



LAW/KINGDON, INC.

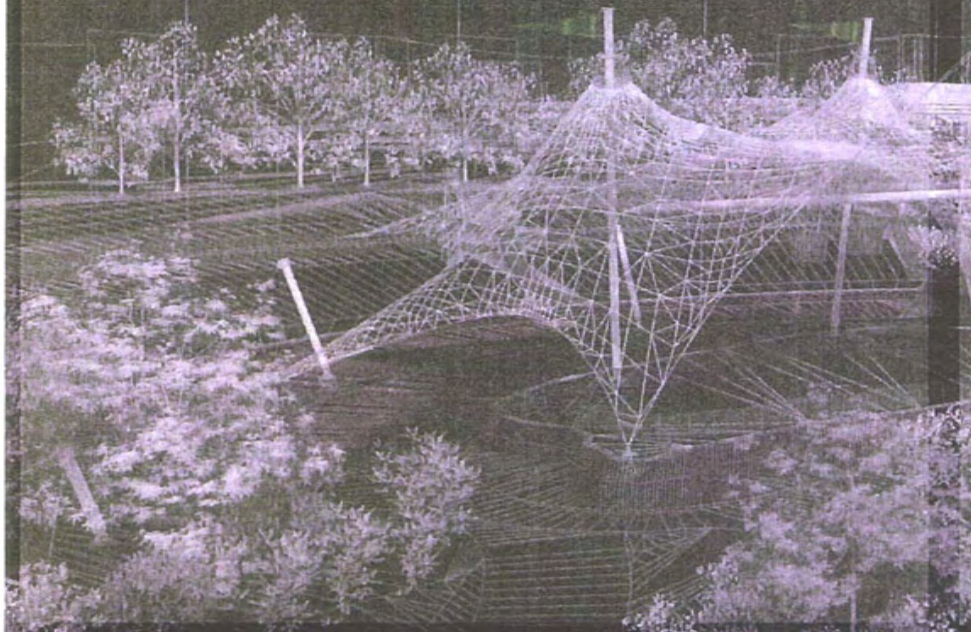
Architects * Engineers * Planners

THE KEEPER SEGMENT

- KEEPER PLAZA
- PEDESTRIAN BRIDGES
- PLAZAS & OVERLOOKS

THE AMPITHEATER SEGMENT

- AMPHITHEATRE
- RIVER WALK
- FOUNTAIN ENTRY



EDAW * Wilson & Company * Rock 'N' Steel * Greteman Group * Vicki Scuri - Siteworks * HHPA, Inc. * McClelland Sound, Inc. * HNTB * Special Effects Unlimited, Inc.



WICHITA RIVER
CORRIDOR
IMPROVEMENT
PROJECT

PROJECT SUMMARY



LAW/KINGDON, INC.

Architects • Engineers • Planners

THE KEEPER SEGMENT

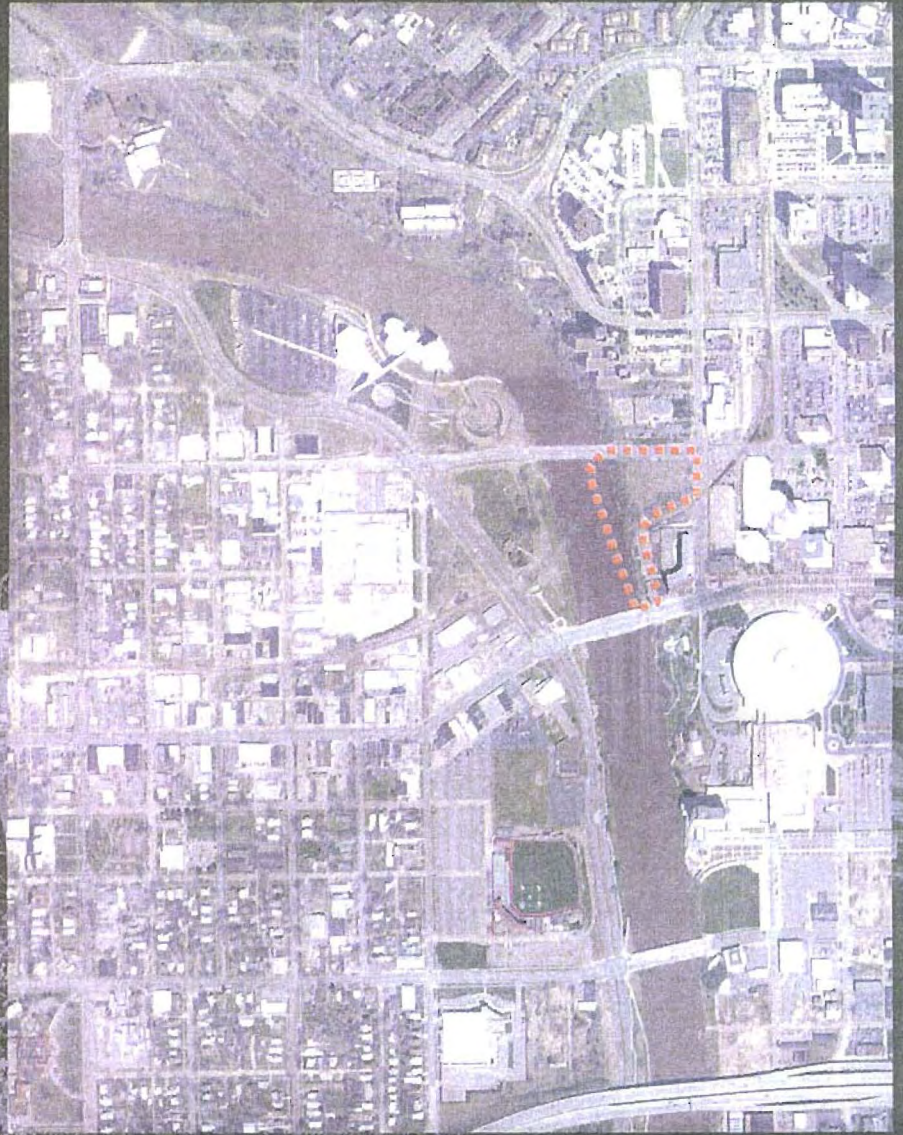
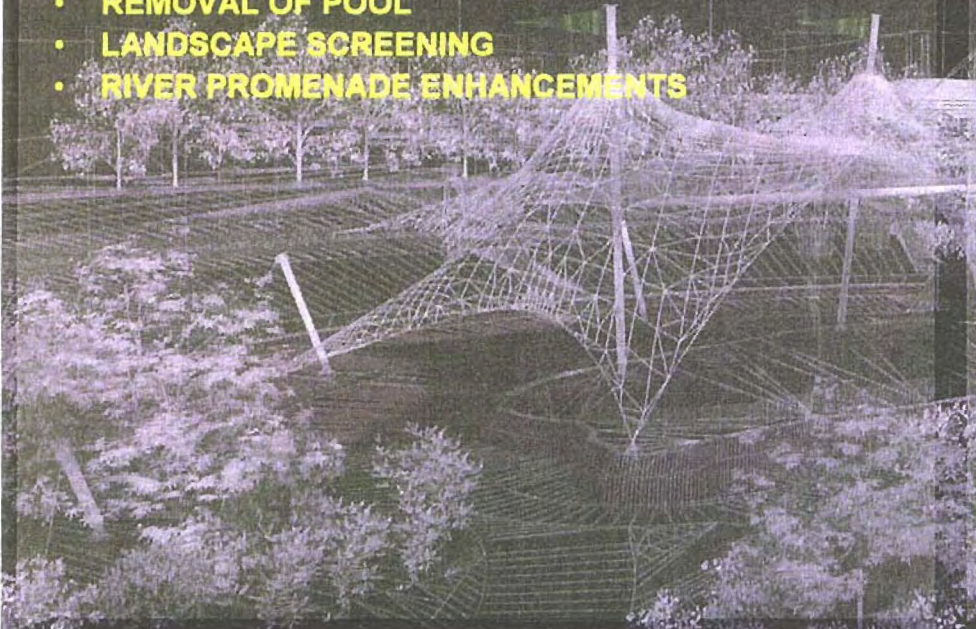
- KEEPER PLAZA
- PEDESTRIAN BRIDGES
- PLAZAS & OVERLOOKS

THE AMPITHEATER SEGMENT

- AMPHITHEATRE
- RIVER WALK
- FOUNTAIN ENTRY

THE BROADVIEW SEGMENT

- REMOVAL OF POOL
- LANDSCAPE SCREENING
- RIVER PROMENADE ENHANCEMENTS



EDAW * Wilson & Company * Rock 'N' Steel * Greteman Group * Vicki Scuri - Siteworks * HHPA, Inc. * McClelland Sound, Inc. * HNTB * Special Effects Unlimited, Inc.



WICHITA RIVER
CORRIDOR
IMPROVEMENT
PROJECT

PROJECT SUMMARY



LAW/KINGDON, INC.

Architects * Engineers * Planners

THE KEEPER SEGMENT

- KEEPER PLAZA
- PEDESTRIAN BRIDGES
- PLAZAS & OVERLOOKS

THE AMPITHEATER SEGMENT

- AMPHITHEATRE
- RIVER WALK
- FOUNTAIN ENTRY

THE BROADVIEW SEGMENT

- REMOVAL OF POOL
- LANDSCAPE SCREENING
- RIVER PROMENADE ENHANCEMENTS

THE WEST BANK SEGMENT

- RIVER PROMENADE
- SHADE STRUCTURES
- AEROSPACE COMMEMORATIVE PLAZA



EDAW • Wilson & Company • Rock 'N' Steel • Greteman Group • Vicki Scuri – Siteworks • HHPA, Inc. • McClelland Sound, Inc. • HNTB • Special Effects Unlimited, Inc.



WICHITA RIVER
CORRIDOR
IMPROVEMENT
PROJECT

PROJECT SUMMARY



LAW/KINGDON, INC.

Architects • Engineers • Planners



THE KEEPER SEGMENT

- KEEPER PLAZA
- PEDESTRIAN BRIDGES
- PLAZAS & OVERLOOKS

THE AMPHITHEATER SEGMENT

- AMPHITHEATRE
- RIVER WALK
- FOUNTAIN ENTRY

THE BROADVIEW SEGMENT

- REMOVAL OF TRUSS

- LANDSCAPE SCREENING
- RIVER PROMENADE ENHANCEMENTS

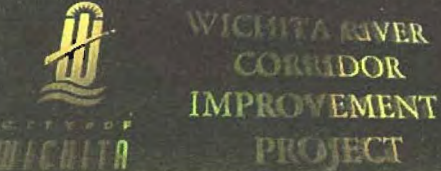
THE WEST BANK SEGMENT

- RIVER PROMENADE
- SHADE STRUCTURES
- AEROSPACE COMMEMORATIVE PLAZA

THE MUSEUM DISTRICT SEGMENT

- MUSEUM PAUSE POINTS
- EARTHWORKS TRAIL HEAD
- LANDSCAPE AND SITE FURNISHINGS

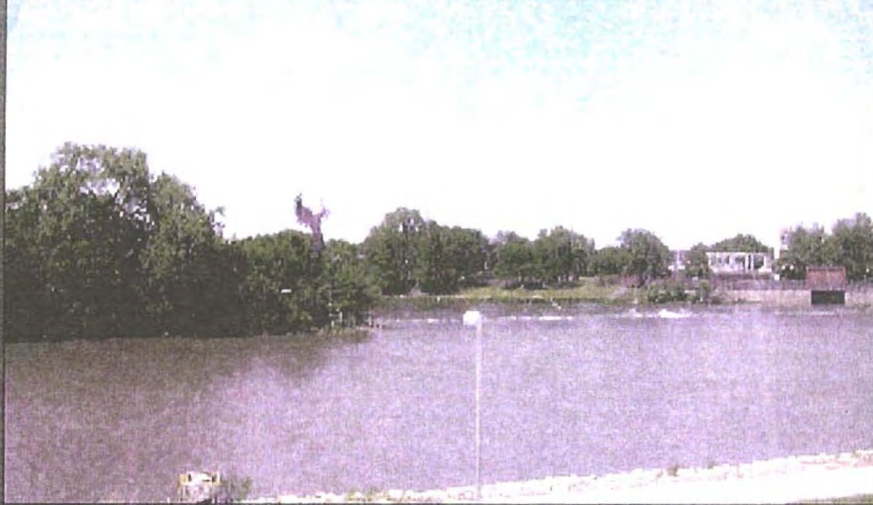
EDAW * Wilson & Company * Rock 'N' Steel * Greteman Group * Vicki Scuri - Siteworks * HHPA, Inc. * McClelland Sound, Inc. * HNTB * Special Effects Unlimited, Inc.



PROJECT SUMMARY



VIEW - #1



VIEW - #2



THE KEEPER SEGMENT – EXISTING

- KEEPER PLAZA
- PEDESTRIAN BRIDGES

EDAW * Wilson & Company * Rock 'N' Steel * Greteman Group * Vicki Scuri – Siteworks * HHPA, Inc. * McClelland Sound, Inc. * HNTB * Special Effects Unlimited, Inc.



WICHITA RIVER
CORRIDOR
IMPROVEMENT
PROJECT

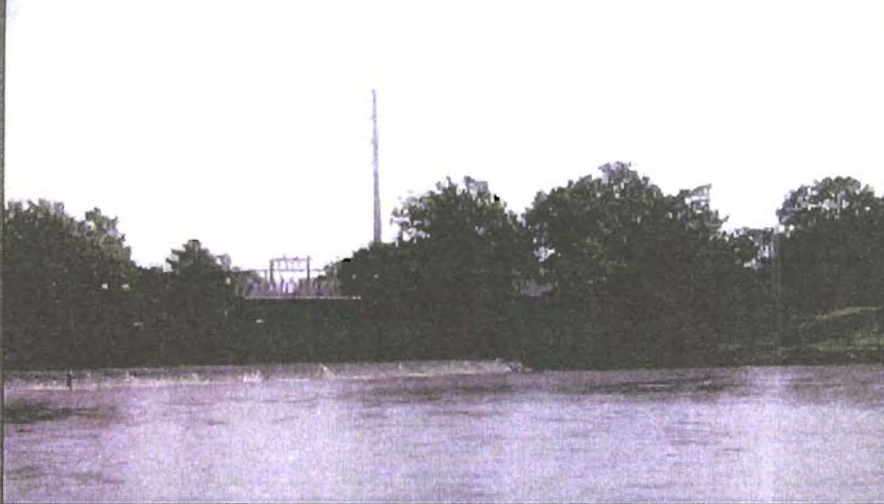
PROJECT SUMMARY



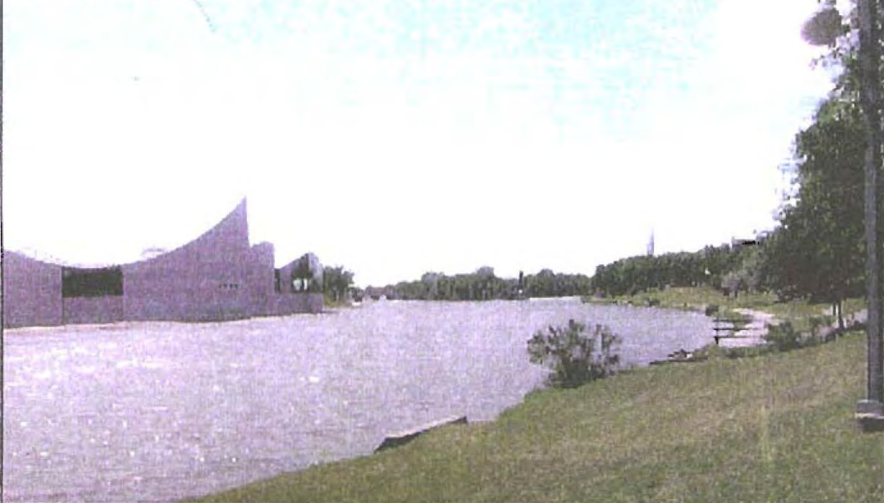
LAW/KINGDON, INC.

Architects • Engineers • Planners

VIEW - #3



VIEW - #4



THE KEEPER SEGMENT – EXISTING

- KGE DAM PLAZA
- MEMORIAL PARK OVERLOOK

EDAW • Wilson & Company • Rock 'N' Steel • Greteman Group • Vicki Scuri – Siteworks • HHPA, Inc. • McClelland Sound, Inc. • HNTB • Special Effects Unlimited, Inc.



WICHITA RIVER
CORRIDOR
IMPROVEMENT
PROJECT

PROJECT SUMMARY



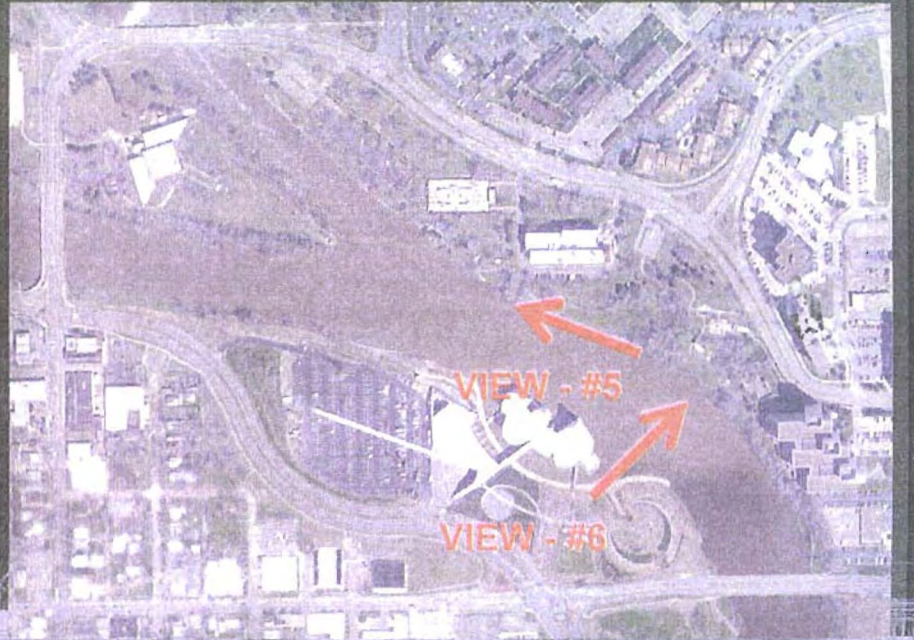
LAW/KINGDON, INC.

Architects • Engineers • Planners

VIEW - #5



VIEW - #6



THE KEEPER SEGMENT – EXISTING

- BIKE PATH AND RIVER PROMENADE
- USS WICHITA BOAT LANDING

EDAW * Wilson & Company * Rock 'N' Steel * Greteman Group * Vicki Scuri – Siteworks * HHPA, Inc. * McClelland Sound, Inc. * HNTB * Special Effects Unlimited, Inc.



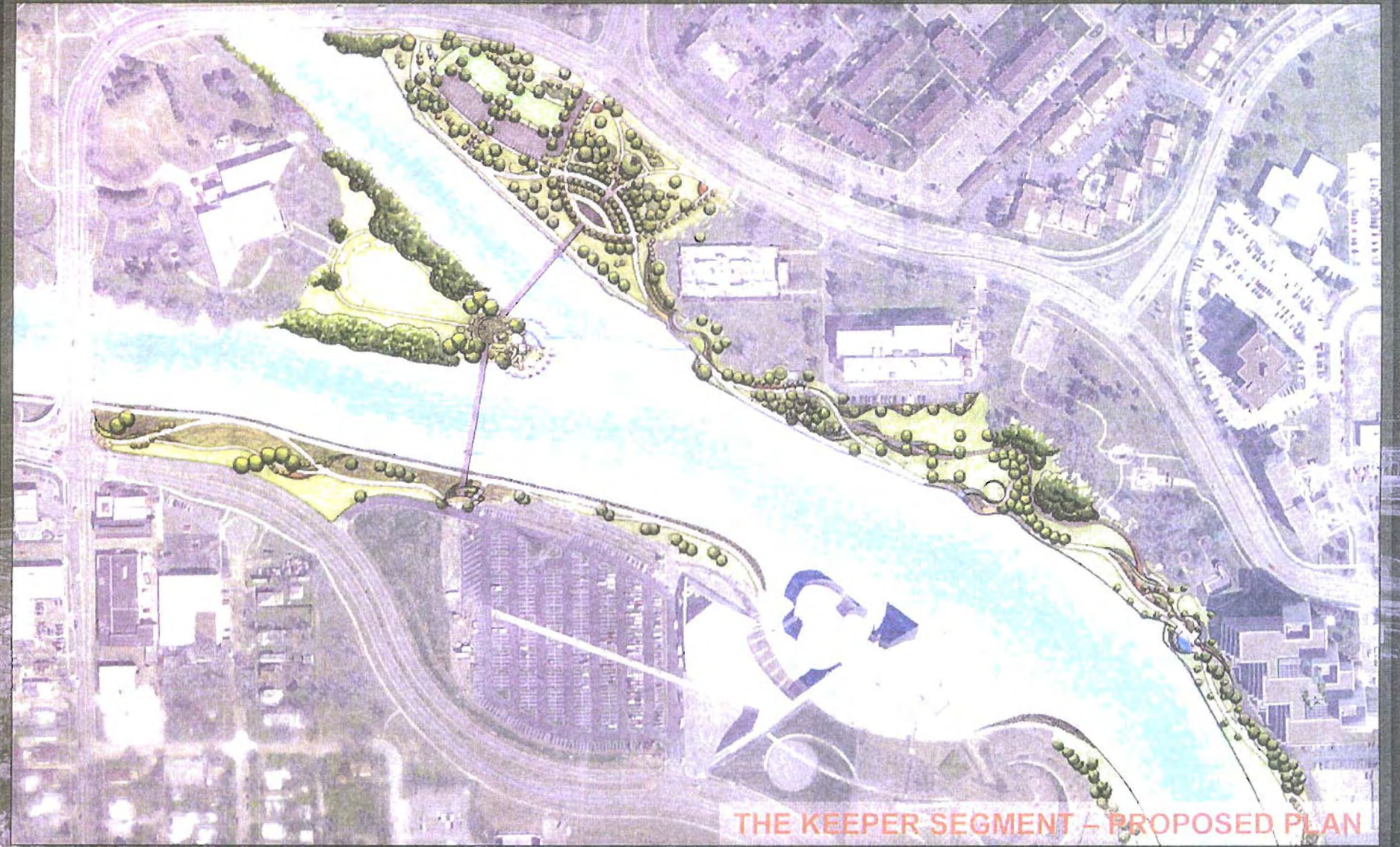
WICHITA RIVER
CORRIDOR
IMPROVEMENT
PROJECT

PROJECT SUMMARY



LAW/KINGDON, INC.

Architects • Engineers • Planners



THE KEEPER SEGMENT - PROPOSED PLAN

EDAW * Wilson & Company * Rock 'N' Steel * Greteman Group * Vicki Scuri - Siteworks * HHPA, Inc. * McClelland Sound, Inc. * HNTB * Special Effects Unlimited, Inc.

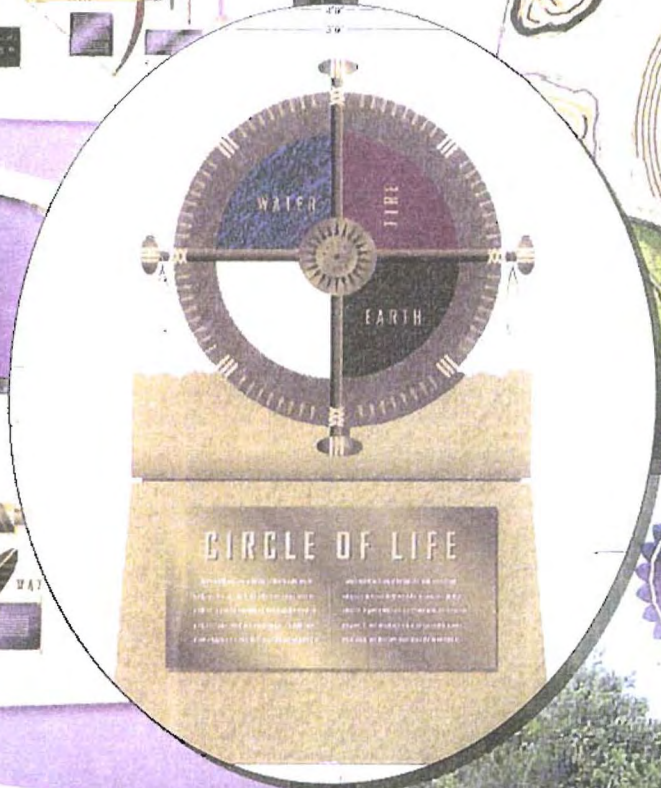
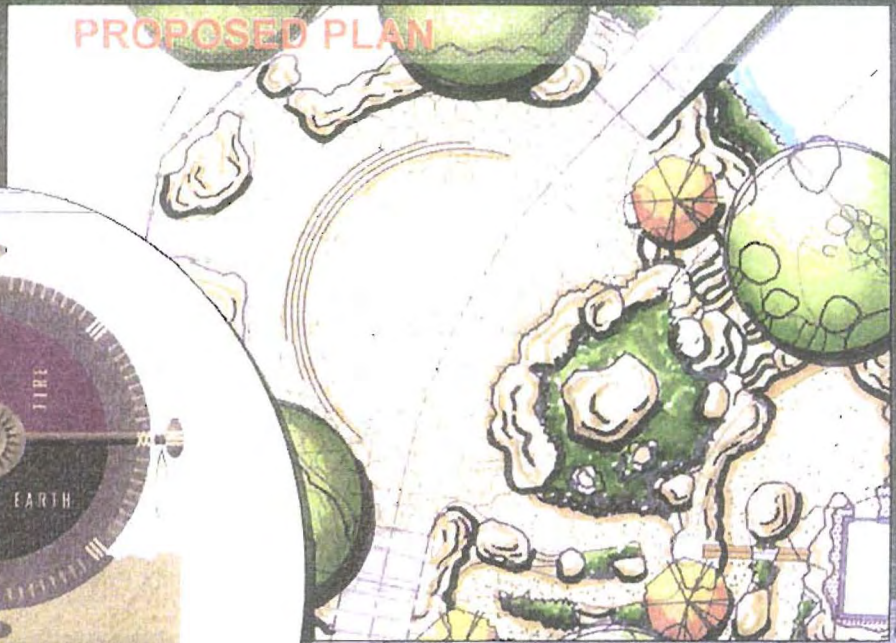


WICHITA RIVER
CORRIDOR
IMPROVEMENT
PROJECT

PROJECT SUMMARY



LAW/KINGDON, INC.
Architects * Engineers * Planners



THE KEEPER SEGMENT - PROPOSED

EDAW * Wilson & Company * Rock 'N' Steel * Greteman Group * Vicki Scuri - Siteworks * HHPA, Inc. * McClelland Sound, Inc. * HNTB * Special Effects Unlimited, Inc.



WICHITA RIVER
CORRIDOR
IMPROVEMENT
PROJECT

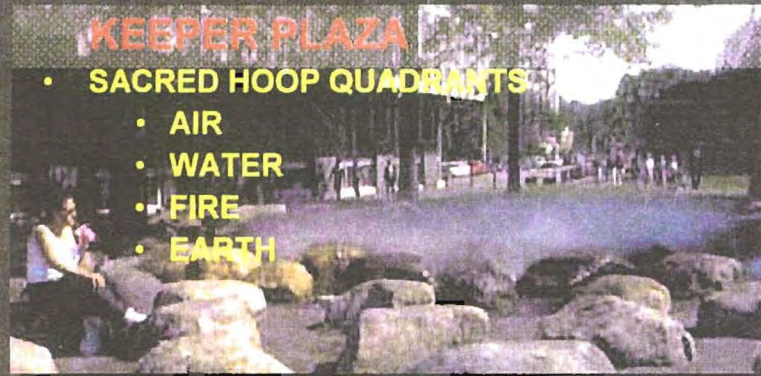
PROJECT SUMMARY



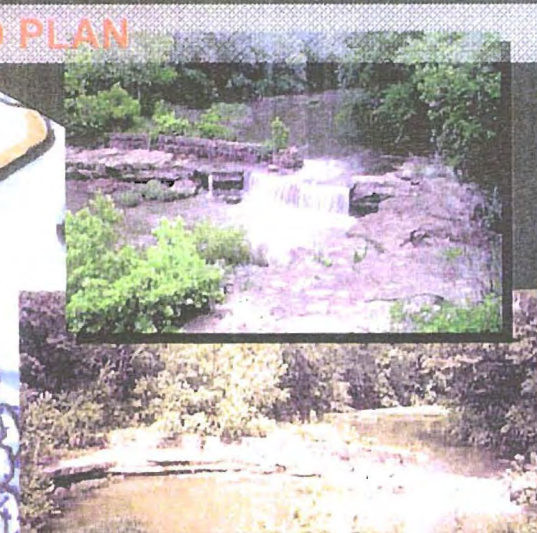
LAW/KINGDON, INC.
Architects * Engineers * Planners

KEEPER PLAZA

- SACRED HOOP QUADRANTS
 - AIR
 - WATER
 - FIRE
 - EARTH



PROPOSED PLAN



THE KEEPER SEGMENT - PROPOSED

EDAW * Wilson & Company * Rock 'N' Steel * Greteman Group * Vicki Scuri - Siteworks * HHPA, Inc. * McClelland Sound, Inc. * HNTB * Special Effects Unlimited, Inc.



WICHITA RIVER
CORRIDOR
IMPROVEMENT
PROJECT

PROJECT SUMMARY

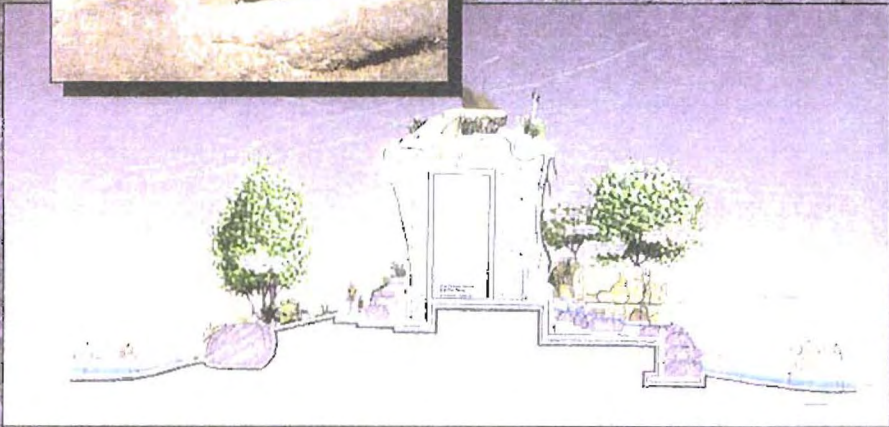
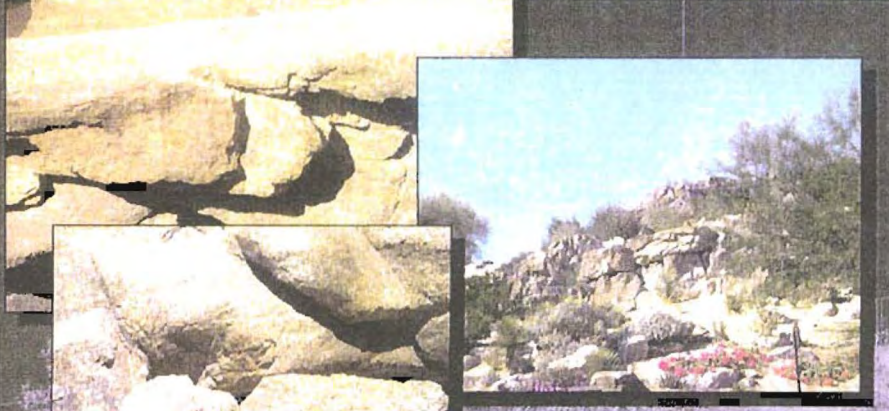


LAW/KINGDON, INC.

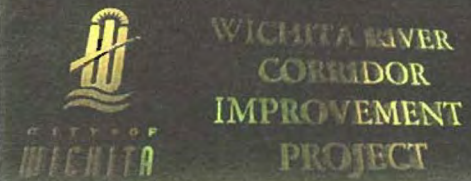
Architects * Engineers * Planners

KEEPER PLAZA

- KEEPER OF THE PLAINS
- HIGH QUALITY ROCKWORK
- AMBIENT SOUND
- INTERPRETIVE INFORMATION



EDAW * Wilson & Company * Rock 'N' Steel * Greteman Group * Vicki Scuri - Siteworks * HHPA, Inc. * McClelland Sound, Inc. * HNTB * Special Effects Unlimited, Inc.



PROJECT SUMMARY



PEDESTRIAN BRIDGES



PROPOSED PLAN



THE KEEPER SEGMENT - PROPOSED

EDAW * Wilson & Company * Rock 'N' Steel * Greteman Group * Vicki Scuri - Siteworks * HHPA, Inc. * McClelland Sound, Inc. * HNTB * Special Effects Unlimited, Inc.



WICHITA RIVER
CORRIDOR
IMPROVEMENT
PROJECT

PROJECT SUMMARY



LAW/KINGDON, INC.

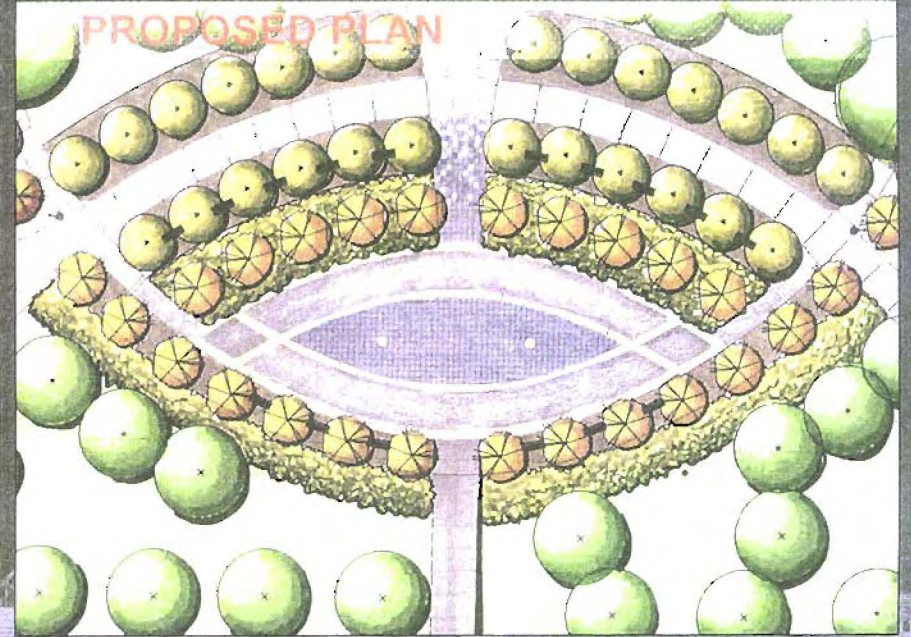
Architects * Engineers * Planners

PEDESTRIAN BRIDGES

- BRIDGE LANDINGS AT:
 - KGE / FOUNTAIN PLAZA
 - SCULPTURE GARDEN
 - PARKING LOT



PROPOSED PLAN



THE KEEPER SEGMENT - PROPOSED

EDAW * Wilson & Company * Rock 'N' Steel * Greteman Group * Vicki Scuri - Siteworks * HHPA, Inc. * McClelland Sound, Inc. * HNTB * Special Effects Unlimited, Inc.



WICHITA RIVER
CORRIDOR
IMPROVEMENT
PROJECT

PROJECT SUMMARY

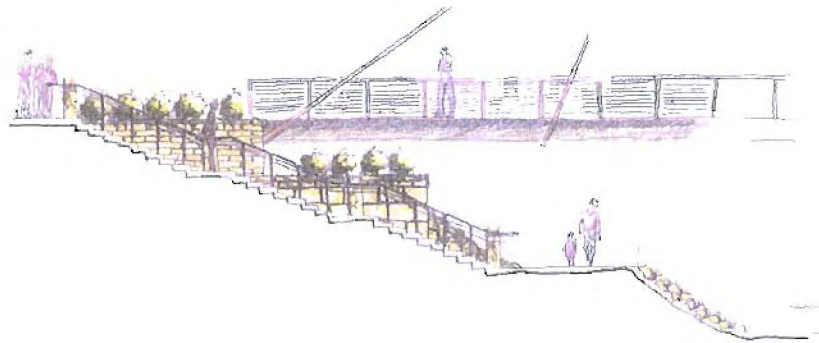


LAW/KINGDON, INC.

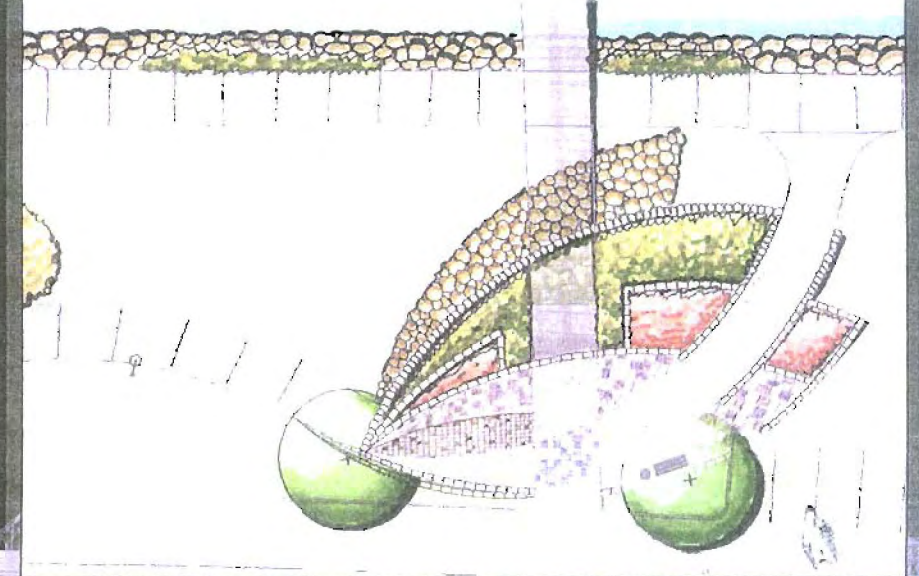
Architects * Engineers * Planners

PEDESTRIAN BRIDGES

- BRIDGE LANDINGS AT:
 - EXPLORATION PLACE



PROPOSED PLAN



THE KEEPER SEGMENT - PROPOSED

EDAW * Wilson & Company * Rock 'N' Steel * Greteman Group * Vicki Scuri - Siteworks * HHPA, Inc. * McClelland Sound, Inc. * HNTB * Special Effects Unlimited, Inc.



WICHITA RIVER
CORRIDOR
IMPROVEMENT
PROJECT

PROJECT SUMMARY

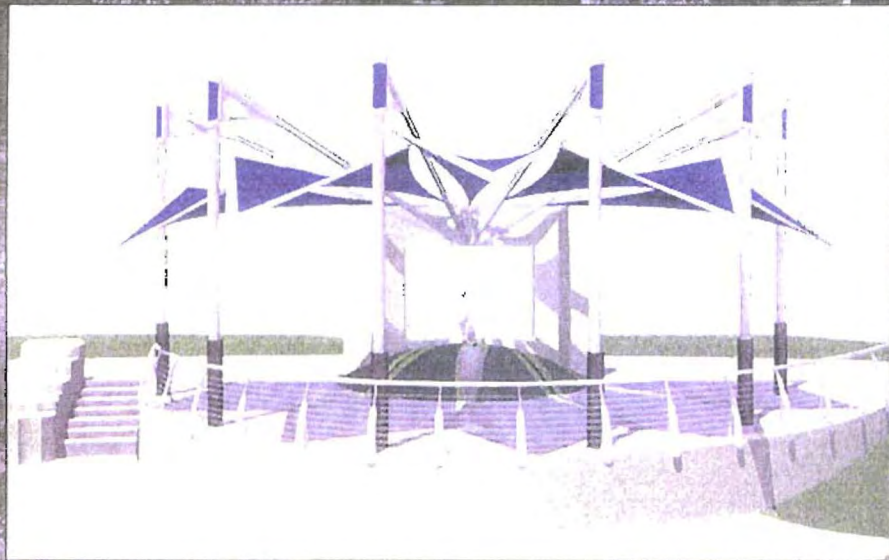
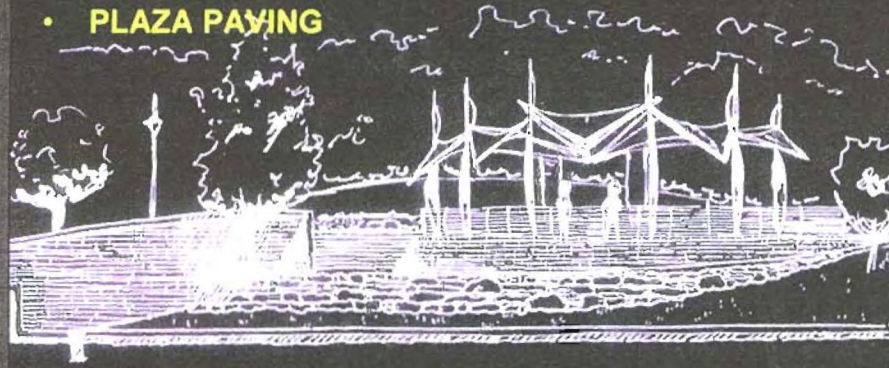


LAW/KINGDON, INC.

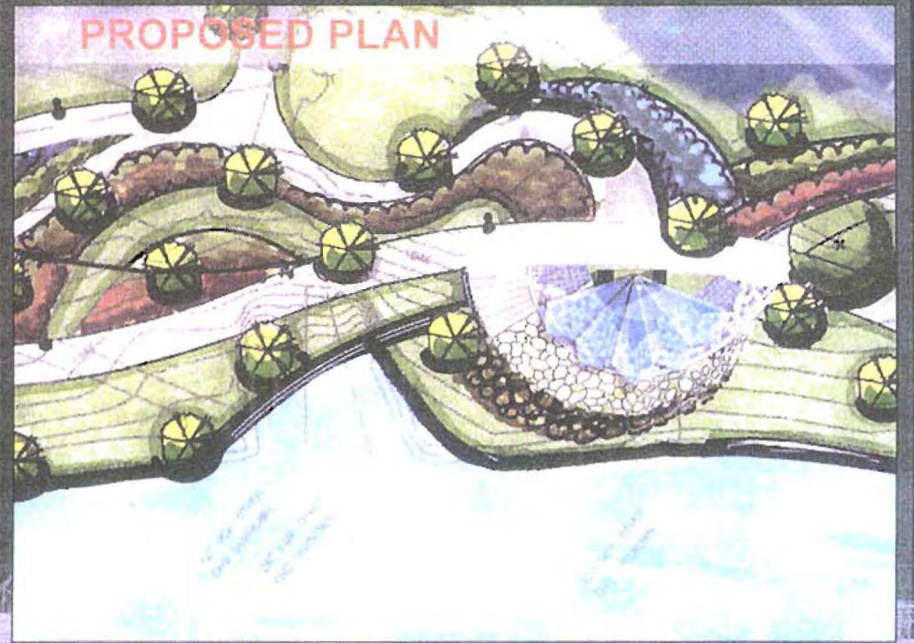
Architects * Engineers * Planners

MEMORIAL PARK OVERLOOK

- SHADE STRUCTURE
- PLAZA PAVING



PROPOSED PLAN



THE KEEPER SEGMENT - PROPOSED

EDAW * Wilson & Company * Rock 'N' Steel * Greteman Group * Vicki Scuri - Siteworks * HHPA, Inc. * McClelland Sound, Inc. * HNTB * Special Effects Unlimited, Inc.



WICHITA RIVER
CORRIDOR
IMPROVEMENT
PROJECT

PROJECT SUMMARY

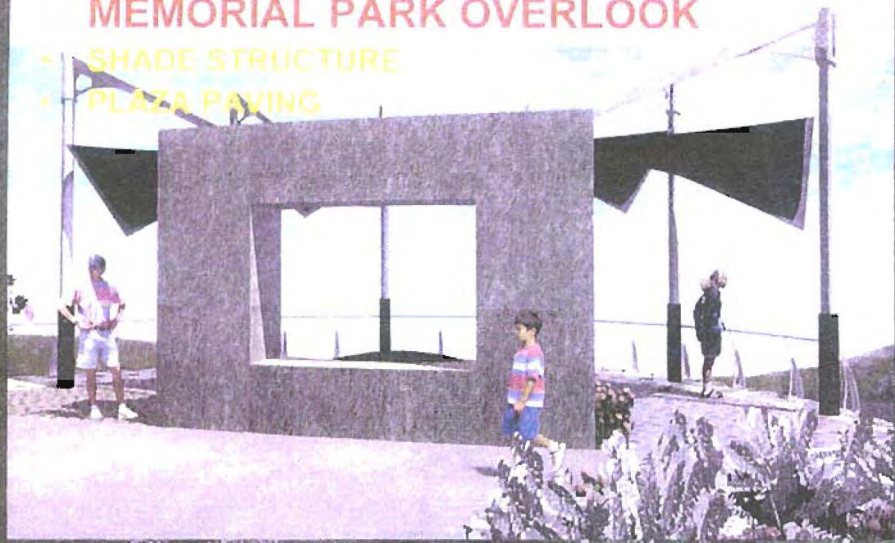


LAW/KINGDON, INC.

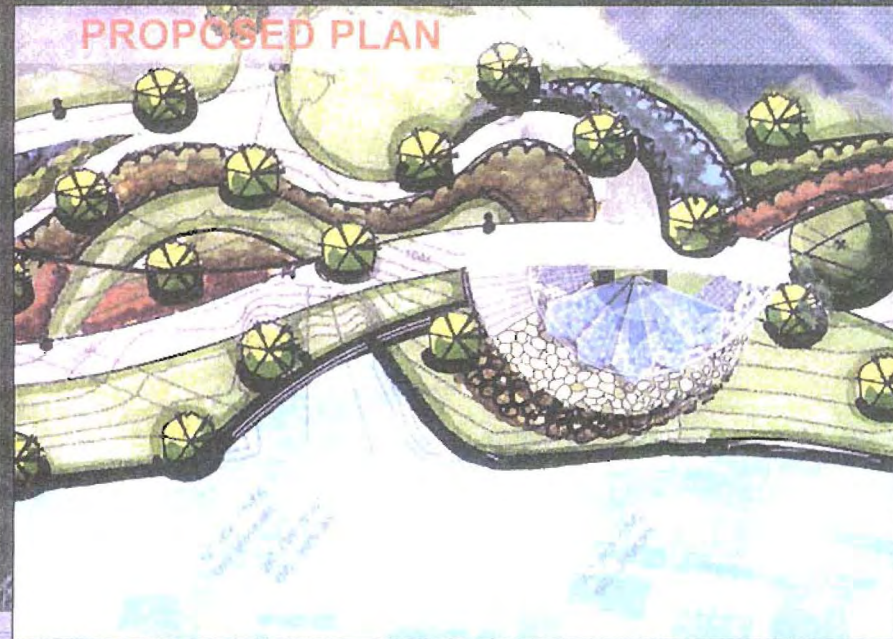
Architects * Engineers * Planners

MEMORIAL PARK OVERLOOK

- SHADE STRUCTURE
- PLAZA PAVING



PROPOSED PLAN



THE KEEPER SEGMENT - PROPOSED

EDAW * Wilson & Company * Rock 'N' Steel * Greteman Group * Vicki Scuri - Siteworks * HHPA, Inc. * McClelland Sound, Inc. * HNTB * Special Effects Unlimited, Inc.



WICHITA RIVER
CORRIDOR
IMPROVEMENT
PROJECT

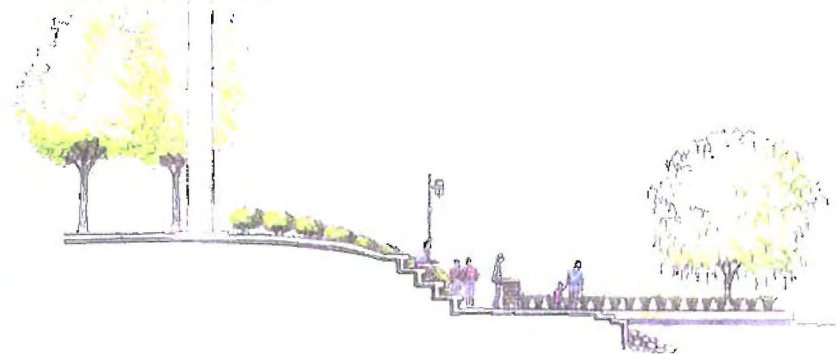
PROJECT SUMMARY



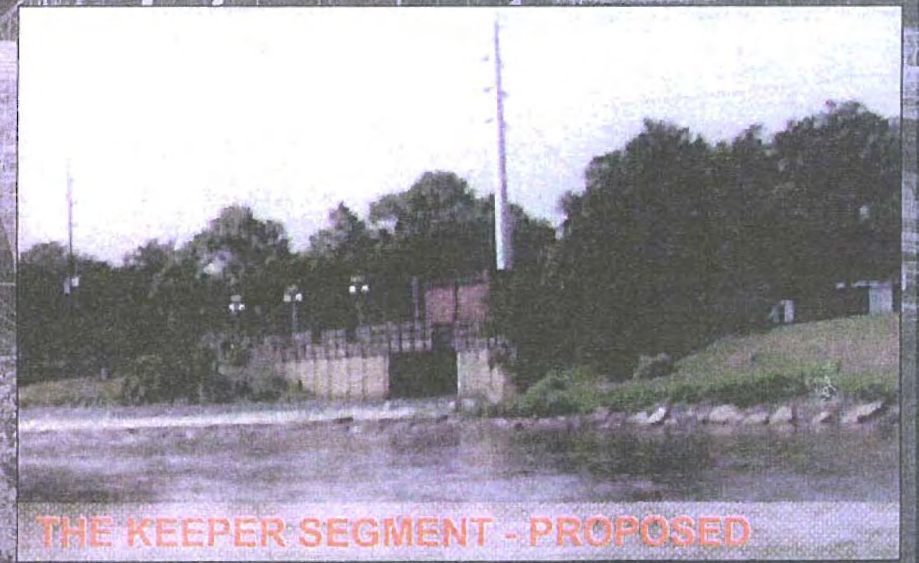
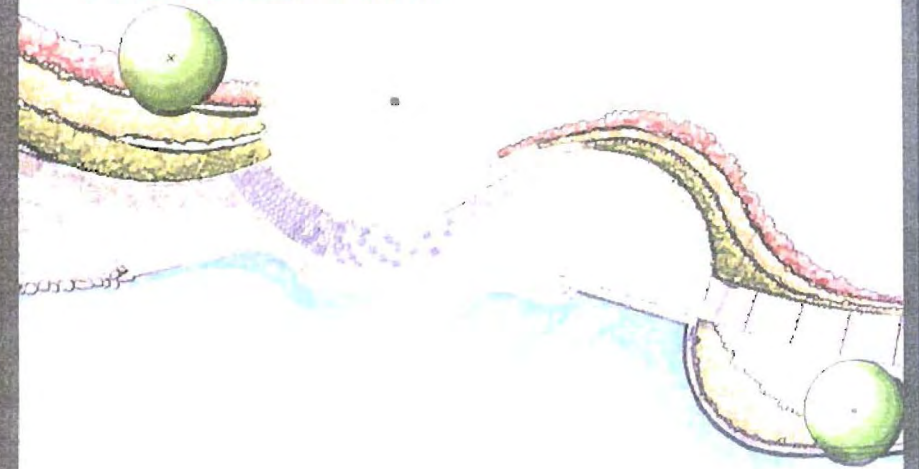
LAW/KINGDON, INC.
Architects * Engineers * Planners

KGE DAM PLAZA

- SHADE STRUCTURE
- PLAZA PAVING



PROPOSED PLAN



THE KEEPER SEGMENT - PROPOSED

EDAW • Wilson & Company • Rock 'N' Steel • Greteman Group • Vicki Scuri - Siteworks • HHPA, Inc. • McClelland Sound, Inc. • HNTB • Special Effects Unlimited, Inc.



WICHITA RIVER
CORRIDOR
IMPROVEMENT
PROJECT

PROJECT SUMMARY



LAW/KINGDON, INC.

Architects • Engineers • Planners

USS WICHITA BOAT LANDING
 • COMMEMORATIVE PLAZA
 • PLAZA PAVING



THE KEEPER SEGMENT - PROPOSED

EDAW * Wilson & Company * Rock 'N' Steel * Greteman Group * Vicki Scuri - Siteworks * HHPA, Inc. * McClelland Sound, Inc. * HNTB * Special Effects Unlimited, Inc.

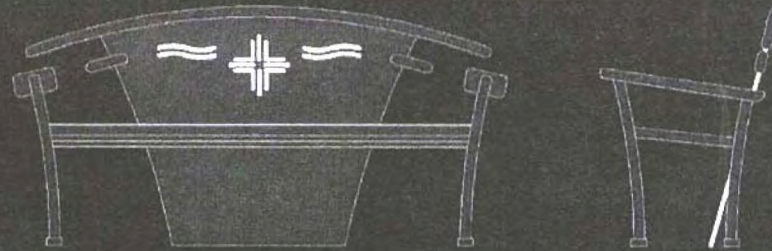
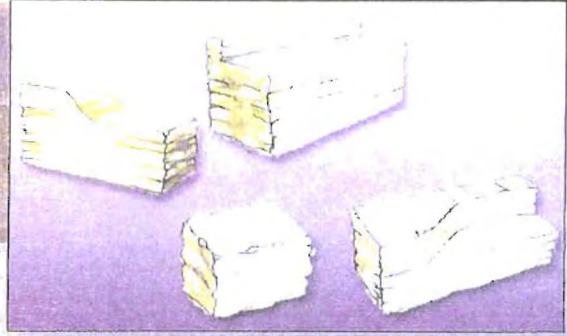
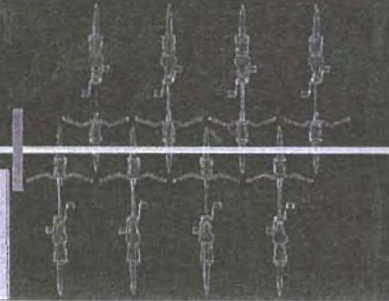


PROJECT SUMMARY



BIKE PATH & RIVER WALK

- EDGE TREATMENTS
- SITE AMENITIES



THE KEEPER SEGMENT - PROPOSED

EDAW • Wilson & Company • Rock 'N' Steel • Greteman Group • Vicki Scuri - Siteworks • HMPA, Inc. • McClelland Sound, Inc. • HNTB • Special Effects Unlimited, Inc.



WICHITA RIVER
CORRIDOR
IMPROVEMENT
PROJECT

PROJECT SUMMARY



LAW/KINGDON, INC.
Architects • Engineers • Planners



THE AMPITHEATER SEGMENT - EXIST.

- FOUNTAIN ENTRY
- McCLEAN MEMORIAL FOUNTAIN

EDAW * Wilson & Company * Rock 'N' Steel * Greteman Group * Vicki Scuri - Siteworks * HHPA, Inc. * McClelland Sound, Inc. * HNTB * Special Effects Unlimited, Inc.



PROJECT SUMMARY



VIEW - #3



VIEW - #4



THE AMPITHEATER SEGMENT - EXIST.

- AMPHITHEATRE SITE
- RIVER WALK

EDAW * Wilson & Company * Rock 'N' Steel * Grateman Group * Vicki Scuri - Siteworks * HHPA, Inc. * McClelland Sound, Inc. * HNTB * Special Effects Unlimited, Inc.



WICHITA RIVER
CORRIDOR
IMPROVEMENT
PROJECT

PROJECT SUMMARY



LAW/KINGDON, INC.

Architects * Engineers * Planners



THE AMPITHEATER SEGMENT - PROPOSED

EDAW * Wilson & Company * Rock 'N' Steel * Greteman Group * Vicki Scuri - Siteworks * HHPA, Inc. * McClelland Sound, Inc. * HNTB * Special Effects Unlimited, Inc.



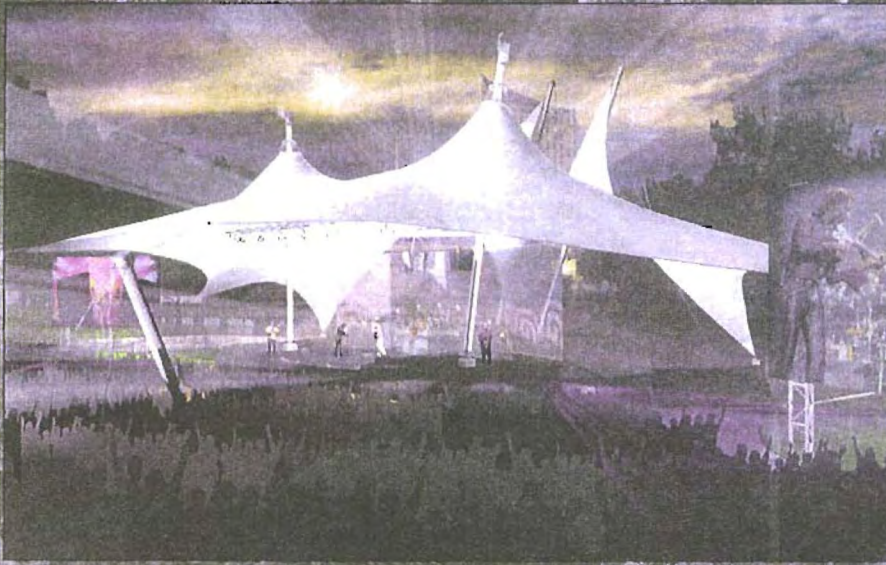
WICHITA RIVER
CORRIDOR
IMPROVEMENT
PROJECT

PROJECT SUMMARY



LAW/KINGDON, INC.
Architects * Engineers * Planners

AMPHITHEATRE
STAGE / TENSILE STRUCTURE



EDAW * Wilson & Company * Rock 'N' Steel * Greteman Group * Vicki Scuri - Siteworks * HHPA, Inc. * McClelland Sound, Inc. * HNTB * Special Effects Unlimited, Inc.



WICHITA RIVER
CORRIDOR
IMPROVEMENT
PROJECT

PROJECT SUMMARY



LAW/KINGDON, INC.

Architects < Engineers > Planners



EDAW * Wilson & Company * Rock 'N' Steel * Greteman Group * Vicki Scuri - Siteworks * HHPA, Inc. * McClelland Sound, Inc. * HNTB * Special Effects Unlimited, Inc.

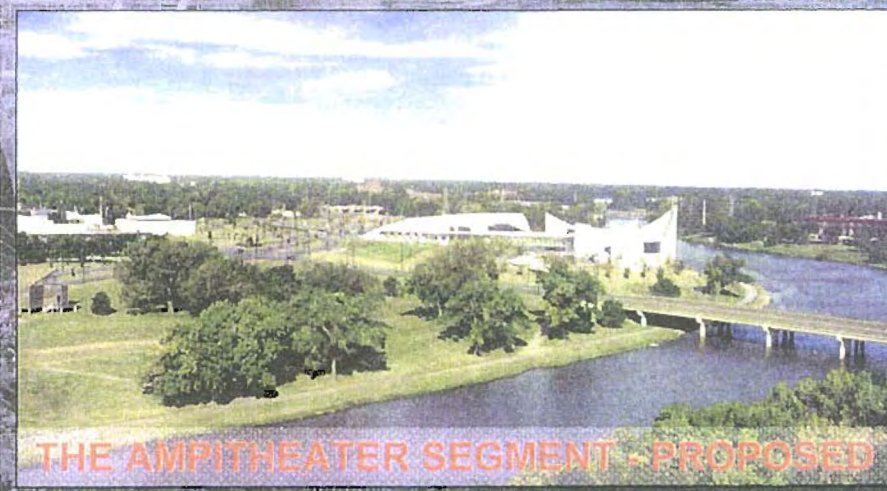
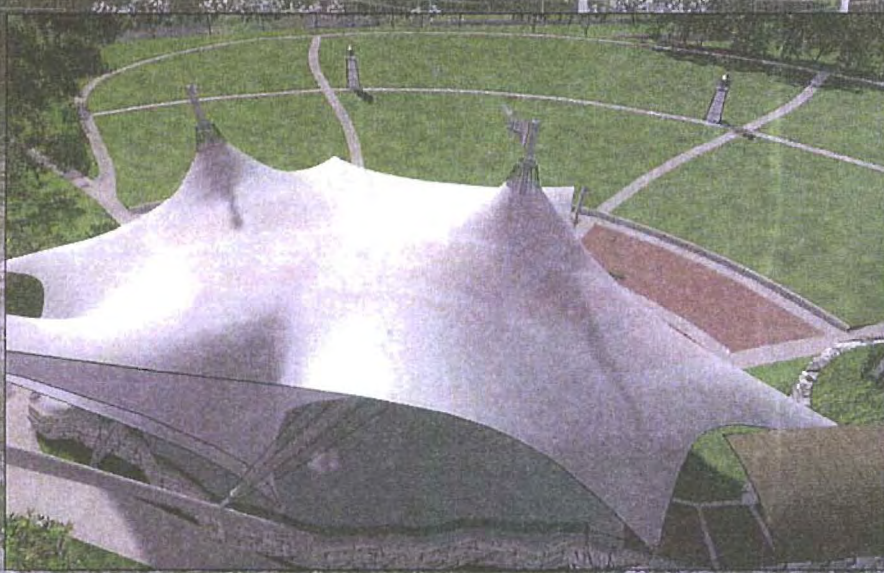


WICHITA RIVER
CORRIDOR
IMPROVEMENT
PROJECT

PROJECT SUMMARY



LAW/KINGDON, INC.
Architects * Engineers * Planners



EDAW • Wilson & Company • Rock 'N' Steel • Greteman Group • Vicki Scuri – Siteworks • HHPA, Inc. • McClelland Sound, Inc. • HNTB • Special Effects Unlimited, Inc.



WICHITA RIVER
CORRIDOR
IMPROVEMENT
PROJECT

PROJECT SUMMARY



LAW/KINGDON, INC.
Architects • Engineers • Planners



THE AMPITHEATER SEGMENT - PROPOSED

EDAW * Wilson & Company * Rock 'N' Steel * Greteman Group * Vicki Scuri - Siteworks * HHPA, Inc. * McClelland Sound, Inc. * HNTB * Special Effects Unlimited, Inc.



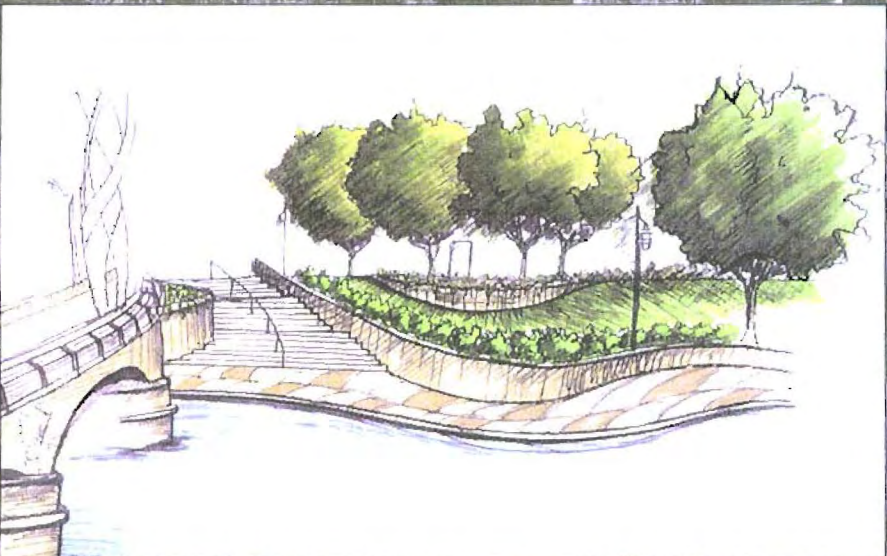
WICHITA RIVER
CORRIDOR
IMPROVEMENT
PROJECT

PROJECT SUMMARY



LAW/KINGDON, INC.

Architects * Engineers * Planners



EDAW * Wilson & Company * Rock 'N' Steel * Greteman Group * Vicki Scuri - Siteworks * HHPA, Inc. * McClelland Sound, Inc. * HNTB * Special Effects Unlimited, Inc.



WICHITA RIVER
CORRIDOR
IMPROVEMENT
PROJECT

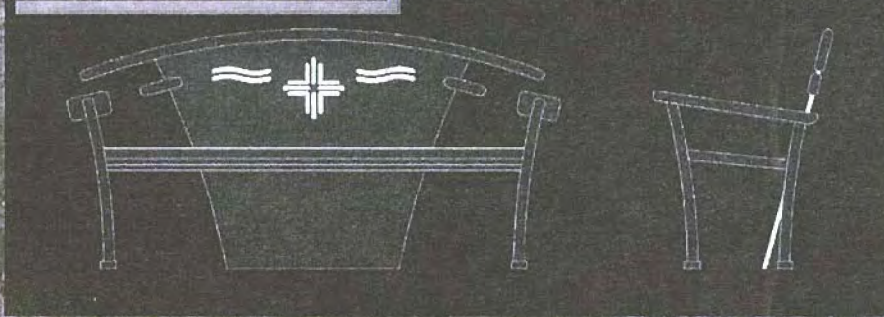
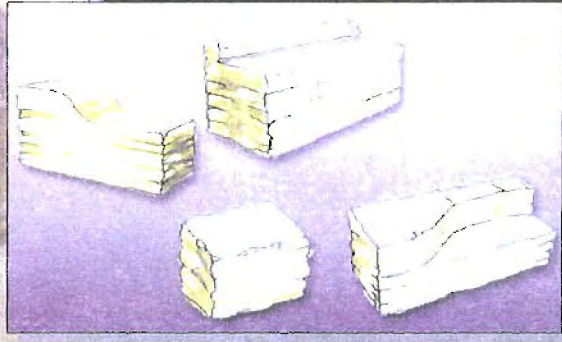
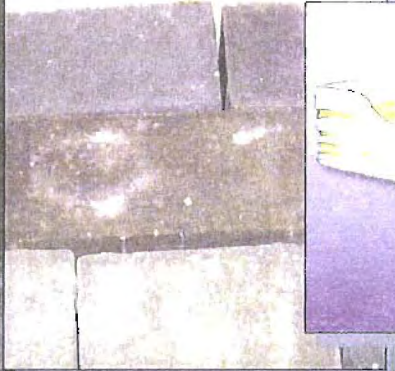
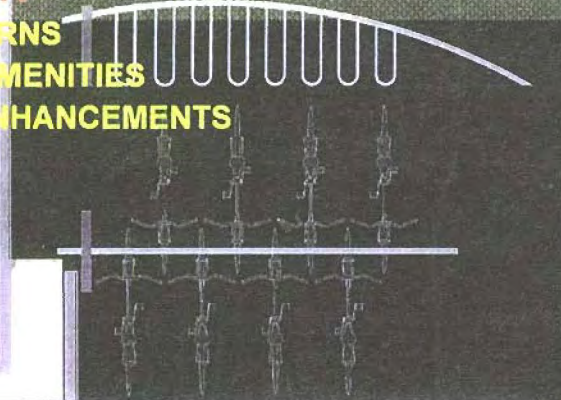
PROJECT SUMMARY



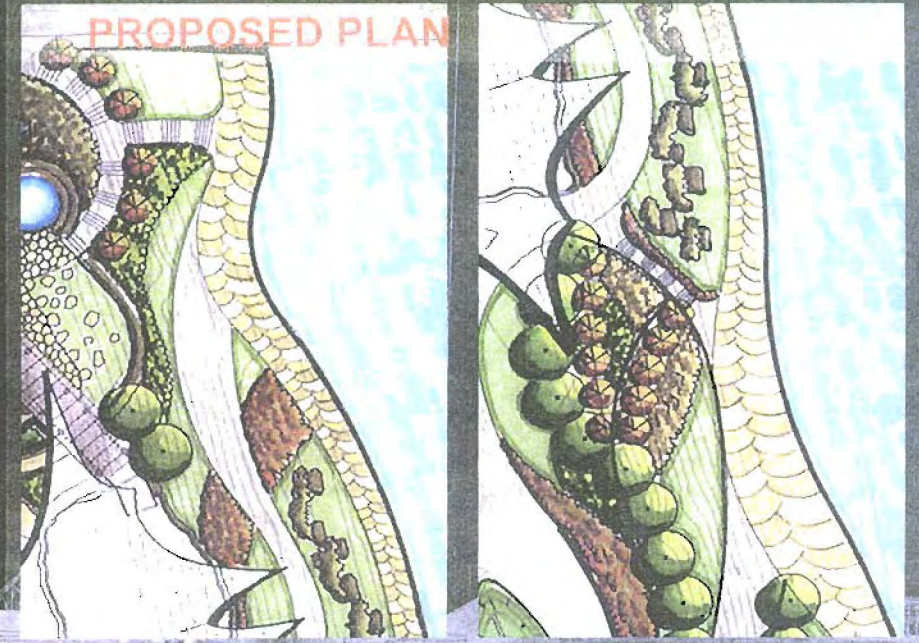
LAW/KINGDON, INC.
Architects * Engineers * Planners

RIVER WALK

- PAVING PATTERNS
- PEDESTRIAN AMENITIES
- LANDSCAPE ENHANCEMENTS



PROPOSED PLAN



EDAW * Wilson & Company * Rock 'N' Steel * Greteman Group * Vicki Scuri - Siteworks * HHPA, Inc. * McClelland Sound, Inc. * HNTB * Special Effects Unlimited, Inc.

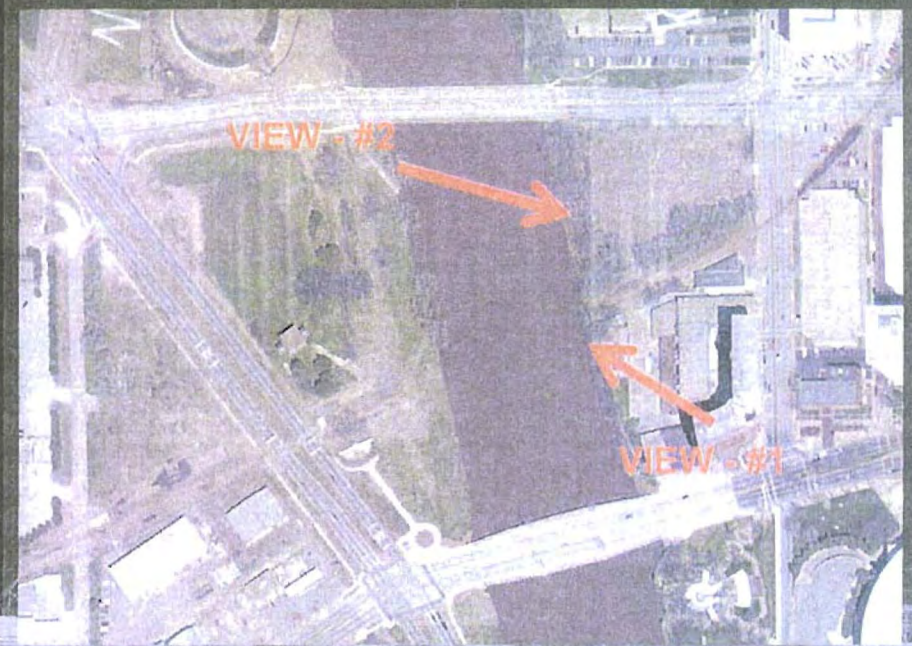
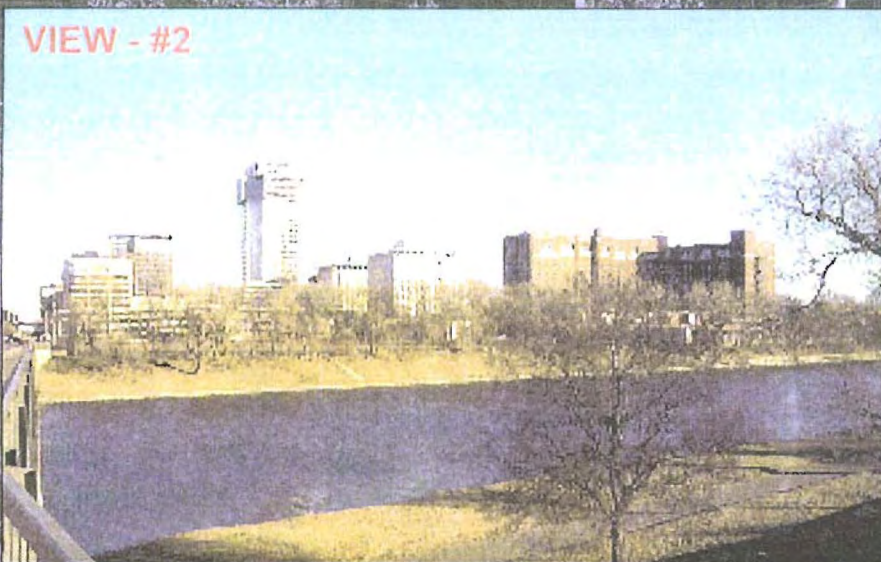


WICHITA RIVER
CORRIDOR
IMPROVEMENT
PROJECT

PROJECT SUMMARY



LAW/KINGDON, INC.
Architects * Engineers * Planners



THE BROADVIEW SEGMENT - EXIST.

- POOL DEMOLITION
- LANDSCAPE SCREENING

EDAW * Wilson & Company * Rock 'N' Steel * Greteman Group * Vicki Scuri - Siteworks * HHPA, Inc. * McClelland Sound, Inc. * HNTB * Special Effects Unlimited, Inc.



WICHITA RIVER
CORRIDOR
IMPROVEMENT
PROJECT

PROJECT SUMMARY



LAW/KINGDON, INC.

Architects * Engineers * Planners



THE BROADVIEW SEGMENT - PROPOSED

EDAW * Wilson & Company * Rock 'N' Steel * Greteman Group * Vicki Scuri - Siteworks * HHPA, Inc. * McClelland Sound, Inc. * HNTB * Special Effects Unlimited, Inc.



WICHITA RIVER
CORRIDOR
IMPROVEMENT
PROJECT

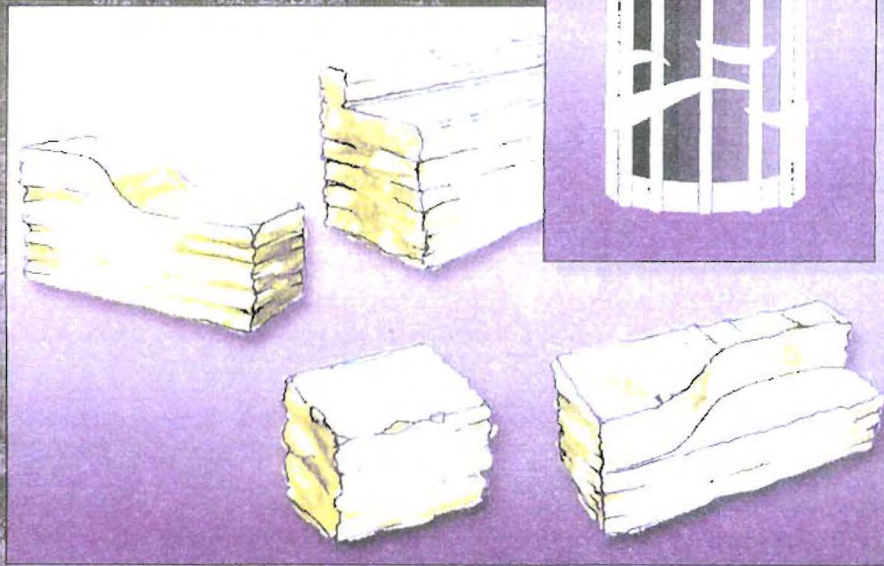
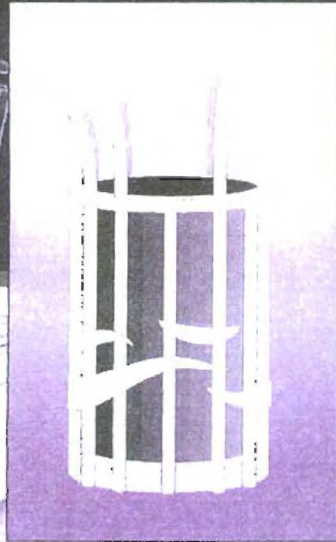
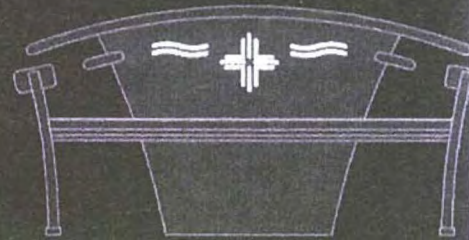
PROJECT SUMMARY



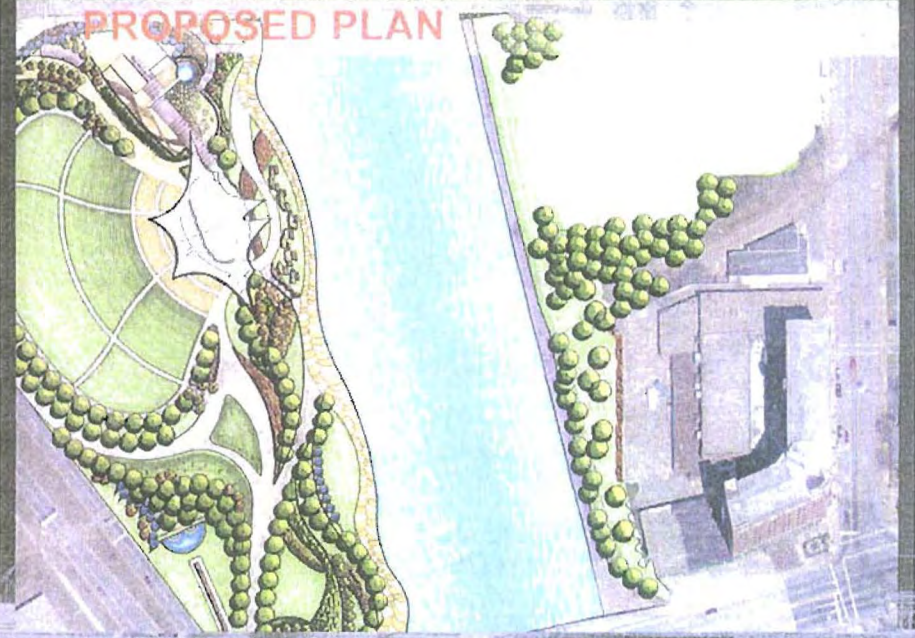
LAW/KINGDON, INC.
Architects * Engineers * Planners

EAST BANK RIVER PROMENADE

- POOL DEMOLITION
- LANDSCAPE SCREENING
- RIVER PROMENADE ENHANCEMENTS
- REMOVAL OF PARKING LOT / LANDSCAPING



PROPOSED PLAN



THE BROADVIEW SEGMENT - PROPOSED

EDAW * Wilson & Company * Rock 'N' Steel * Greteman Group * Vicki Scuri - Siteworks * HHPA, Inc. * McClelland Sound, Inc. * HNTB * Special Effects Unlimited, Inc.



WICHITA RIVER
CORRIDOR
IMPROVEMENT
PROJECT

PROJECT SUMMARY



LAW/KINGDON, INC.

Architects * Engineers * Planners



THE WEST BANK SEGMENT - EXIST.
RIVER PROMENADE ENHANCEMENTS
SHADE STRUCTURES

EDAW * Wilson & Company * Rock 'N' Steel * Greteman Group * Vicki Scuri - Siteworks * HHPA, Inc. * McClelland Sound, Inc. * HNTB * Special Effects Unlimited, Inc.

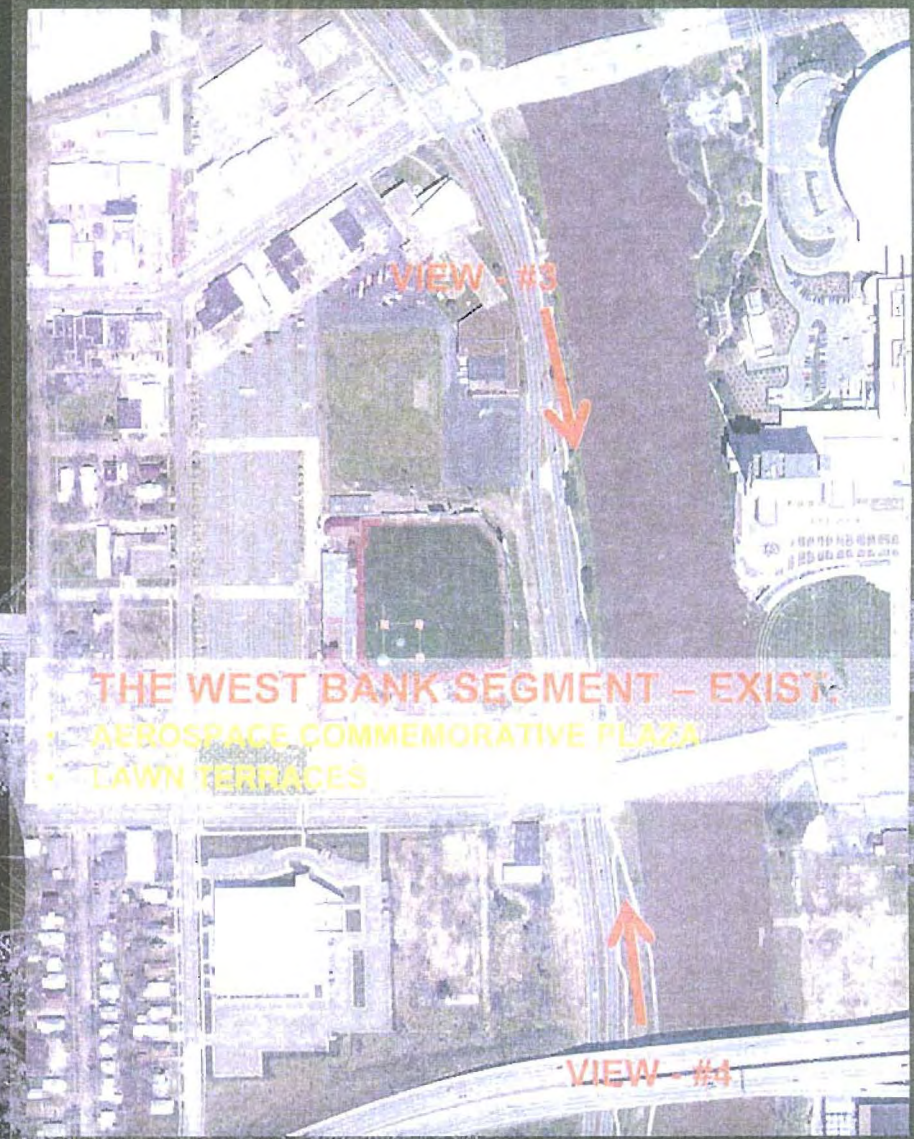


WICHITA RIVER
CORRIDOR
IMPROVEMENT
PROJECT

PROJECT SUMMARY



LAW/KINGDON, INC.
Architects * Engineers * Planners



EDAW * Wilson & Company * Rock 'N' Steel * Greteman Group * Vicki Scuri - Siteworks * HHPA, Inc. * McClelland Sound, Inc. * HNTB * Special Effects Unlimited, Inc.



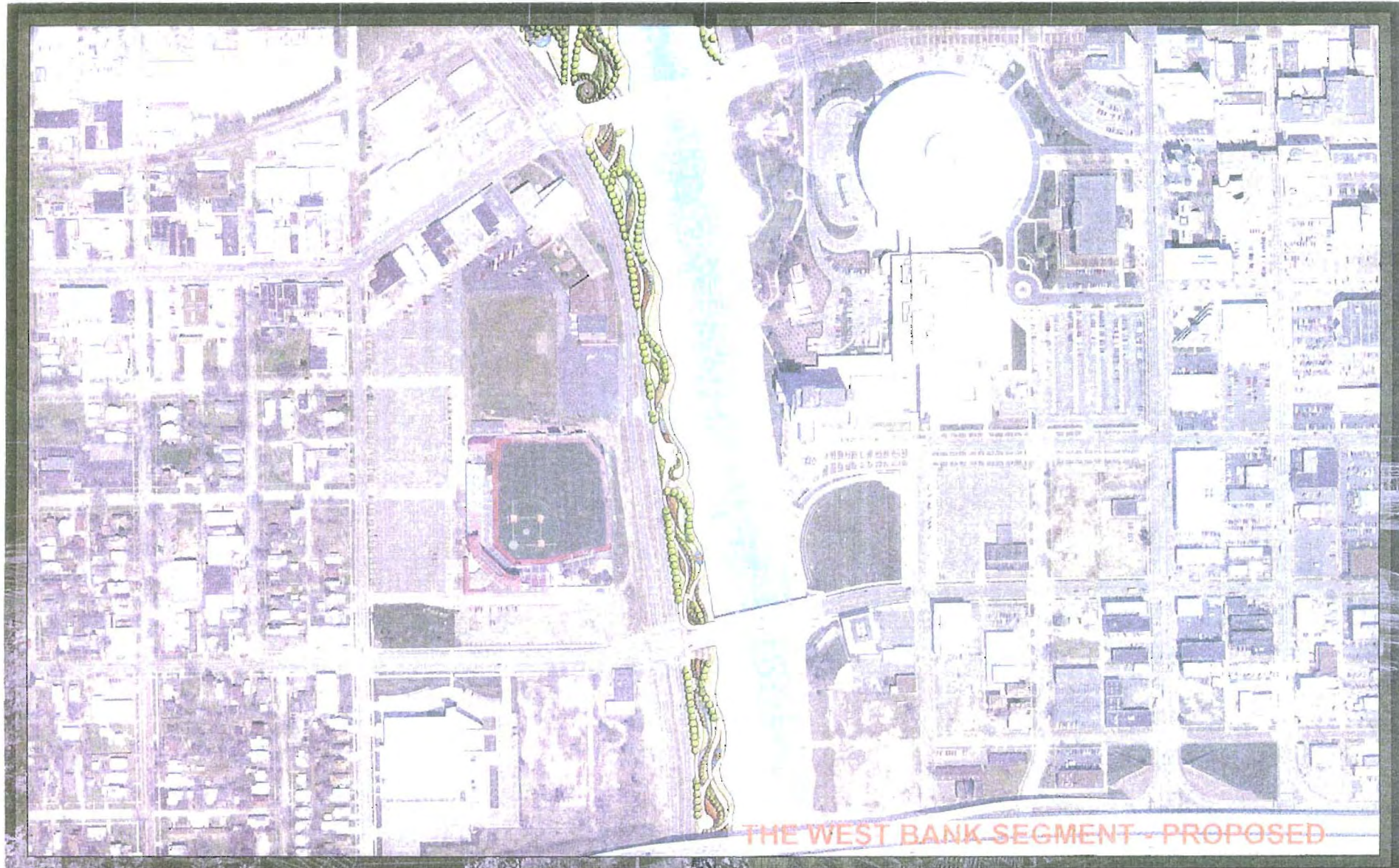
WICHITA RIVER
CORRIDOR
IMPROVEMENT
PROJECT

PROJECT SUMMARY



LAW/KINGDON, INC.

Architects * Engineers * Planners



THE WEST BANK SEGMENT - PROPOSED

EDAW * Wilson & Company * Rock 'N' Steel * Greteman Group * Vicki Scuri - Siteworks * HHPA, Inc. * McClelland Sound, Inc. * HNTB * Special Effects Unlimited, Inc.



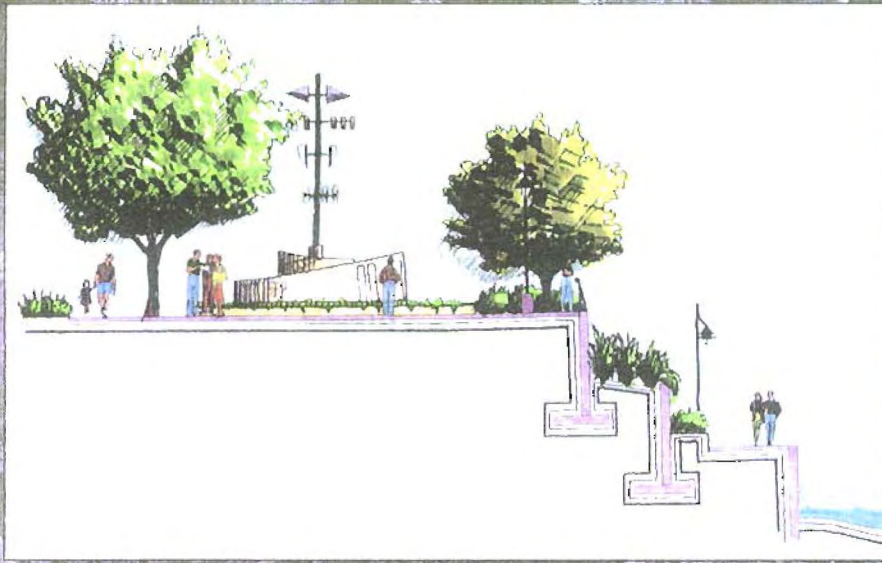
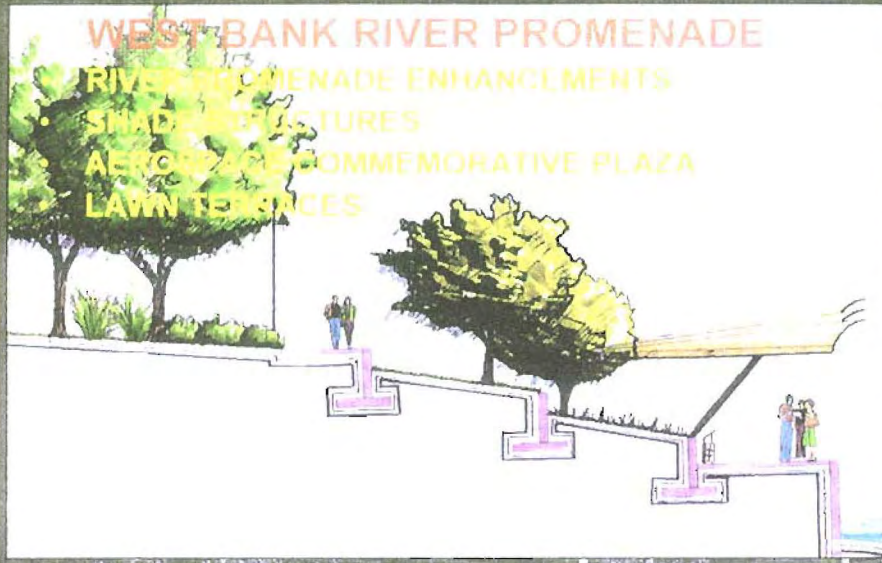
WICHITA RIVER
CORRIDOR
IMPROVEMENT
PROJECT

PROJECT SUMMARY


LAW/KINGDON, INC.
Architects * Engineers * Planners

WEST BANK RIVER PROMENADE

- RIVER PROMENADE ENHANCEMENTS
- SHADE STRUCTURES
- AEROSPACE COMMEMORATIVE PLAZA
- LAWN TERRACES



THE WEST BANK SEGMENT - PROPOSED

EDAW * Wilson & Company * Rock 'N' Steel * Greteman Group * Vicki Scuri - Siteworks * HHPA, Inc. * McClelland Sound, Inc. * HNTB * Special Effects Unlimited, Inc.



WICHITA RIVER
CORRIDOR
IMPROVEMENT
PROJECT

PROJECT SUMMARY



LAW/KINGDON, INC.
Architects * Engineers * Planners

VIEW - #1



VIEW - #2



THE SIM PARK SEGMENT – EXIST.

- EARTH BERMING
- LANDSCAPING

EDAW * Wilson & Company * Rock 'N' Steel * Greteman Group * Vicki Scuri – Siteworks * HHPA, Inc. * McClelland Sound, Inc. * HNTB * Special Effects Unlimited, Inc.



WICHITA RIVER CORRIDOR IMPROVEMENT PROJECT

PROJECT SUMMARY



LAW/KINGDON, INC. Architects * Engineers * Planners



THE COWTOWN SEGMENT - EXIST.

- BIKE PATH ENHANCEMENTS
- PAUSE POINTS

EDAW * Wilson & Company * Rock 'N' Steel * Greteman Group * Vicki Scuri - Siteworks * HHPA, Inc. * McClelland Sound, Inc. * HNTB * Special Effects Unlimited, Inc.



WICHITA RIVER
CORRIDOR
IMPROVEMENT
PROJECT

PROJECT SUMMARY



LAW/KINGDON, INC.

Architects * Engineers * Planners



THE MUSEUM DISTRICT SEGMENT

EDAW * Wilson & Company * Rock 'N' Steel * Greteman Group * Vicki Scuri - Siteworks * HHPA, Inc. * McClelland Sound, Inc. * HNTB * Special Effects Unlimited, Inc.



WICHITA RIVER
CORRIDOR
IMPROVEMENT
PROJECT

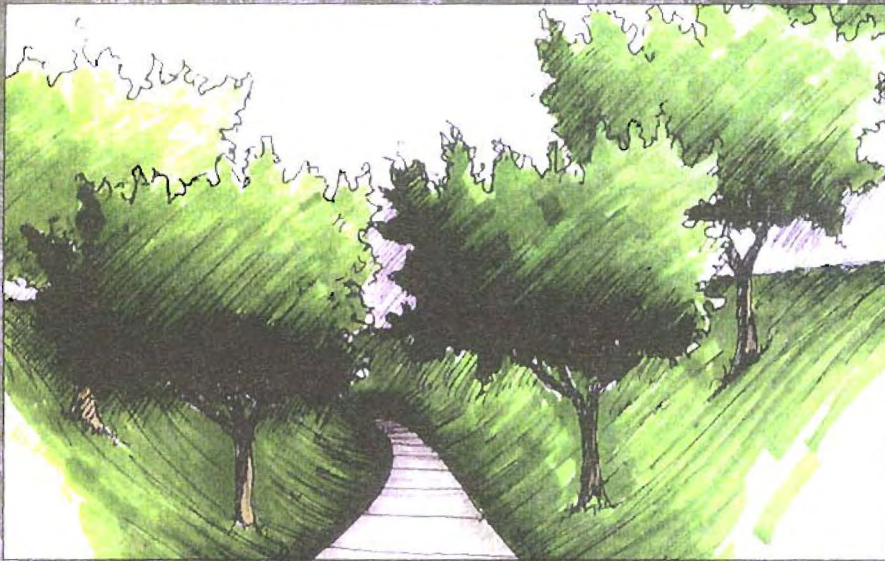
PROJECT SUMMARY



LAW/KINGDON, INC.
Architects * Engineers * Planners

EAST BANK RIVER PROMENADE

- BIKE PATH ENHANCEMENT
- PAUSE POINTS
- EARTH RETAINING
- LANDSCAPING



THE MUSEUM DISTRICT SEGMENT

EDAW * Wilson & Company * Rock 'N' Steel * Greteman Group * Vicki Scuri - Siteworks * HHPA, Inc. * McClelland Sound, Inc. * HNTB * Special Effects Unlimited, Inc.



WICHITA RIVER
CORRIDOR
IMPROVEMENT
PROJECT

PROJECT SUMMARY



LAW/KINGDON, INC.

Architects * Engineers * Planners