

DISCOVERIES

WICHITA DOWNTOWN REVITALIZATION MASTER PLAN

Focus on walkability

- What we heard and saw at the Walk-shops
- What the market findings say about how development and walkability can support each other

January 13, 2010



GOODY CLANCY
ZIMMERMAN/VOLK
W-ZHA
MJB
PEC

Agenda

- What we heard and saw at the Walk-shops, December 4-5
 - Walk-arounds and photo-taking
 - Walk-shop talk
 - Messages on seven walkability factors
- Key opportunities for development and walkability to support each other
- Panel response



Walk-shops

Wichita walkshop photos and comments:
<http://www.flickr.com/photos/walkshops/>

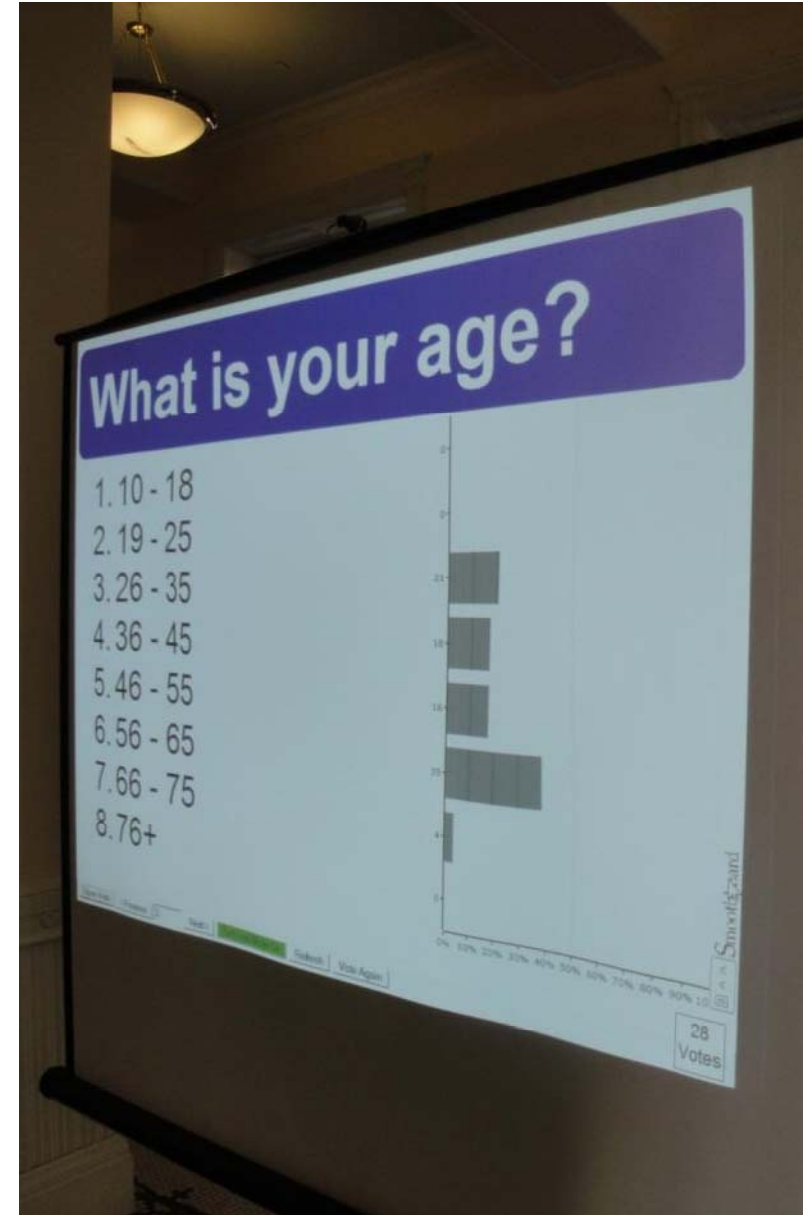


DISCOVERIES



GOODY CLANCY
ZIMMERMAN/VOLK | W-ZHA | MJB | PEC

Walk-shop talk



Messages on seven walkability factors

- Who is downtown
- Safety and cleanliness
- Transportation
- Gateways and barriers
- Pedestrian-oriented streetscape
- Retail
- The Arkansas River



DISCOVERIES



GOODY CLANCY

ZIMMERMAN/VOLK | W-ZHA | MJB | PEC

Who is downtown?

Primary

- Baby boomers: empty nesters can afford downtown
- Young professionals

Secondary

- Business people
- Tourists
- People seeking art, entertainment

Also noted

- Young families
- Workers from throughout Wichita



Safety and cleanliness

First priority

- Bicycle or mounted police
- The new street lights are effective
- Light empty storefronts at night

Second priority

- Reduce littering – especially when bars close

Also noted

- Slow traffic, use back-in diagonal parking
- Make some alleys ped-only
- Douglas rail bridge improvements effective
- Address continued graffiti
- 9-1-1 for panhandling



Transportation

First priority

- Seamless integration of transportation choices: local bus, inter-city bus, taxis, college shuttles, rail – at Union Station
- Expanded, more frequent transit service until midnight every day, with good signage – has improved
- Recreation trails accessible to all ages, with destinations including colleges

Second priority

- Inter-city rail service
- More transportation choices



Gateways and barriers

First priority

- Improved bike access to/through downtown, especially east-west
- Cleaner gateways – commercial areas, birds
- Safer crosswalks generally

Second priority

- New wayfinding technology – i.e. real time parking info

Also noted

- Good existing infrastructure to improve on
- Nice amenities along Douglas, McLean/Seneca
- Physical /psychological barriers occur on all sides



Pedestrian-oriented streetscape

First priority

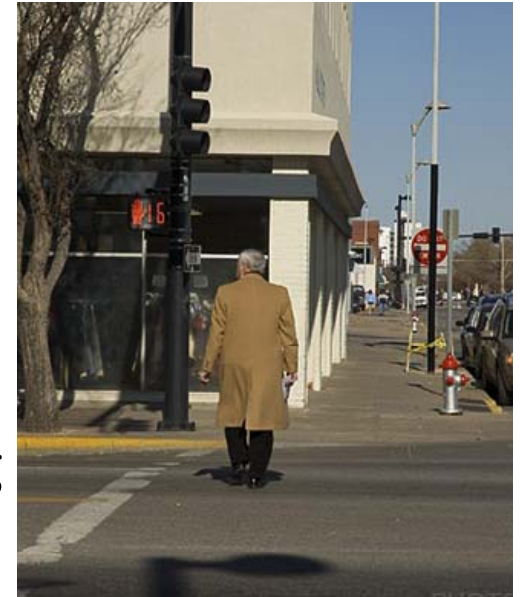
- “Complete streets” serving peds, bikes, transit, cars, business & home addresses
- Outdoor cafes and balconies

Second priority

- Unique building/street design features, lighting
- More public events – markets, during day

Also noted

- More visible crosswalks
- More street trees
- Fewer sidewalk obstructions (poles, meters...)
- Unifying streetscape design elements



Retail

First priority

- Downtown retail needs to be pedestrian-oriented
- Downtown retail could be a regional attraction

Second priority

- Retail isn't necessarily first priority
- Retail does not define the success of downtown



The Arkansas River corridor

First priority

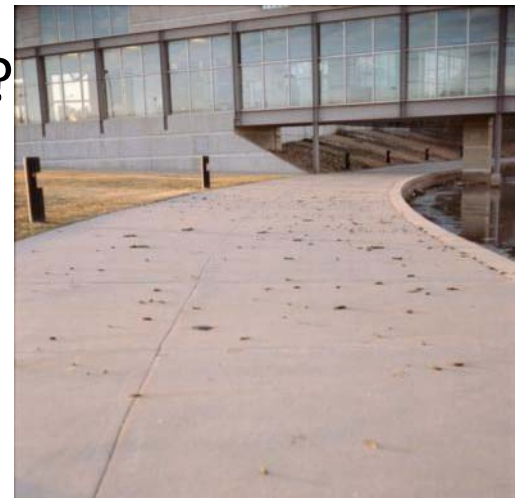
- More housing and retail/restaurants belong along river
- More recreation opportunities: bike, kayak, canoe; rentals

Second priority

- Rethink McLean – more parks, housing, access?
- Is a current asset; hosts events accessible to all
- More public art/sculpture

Also noted

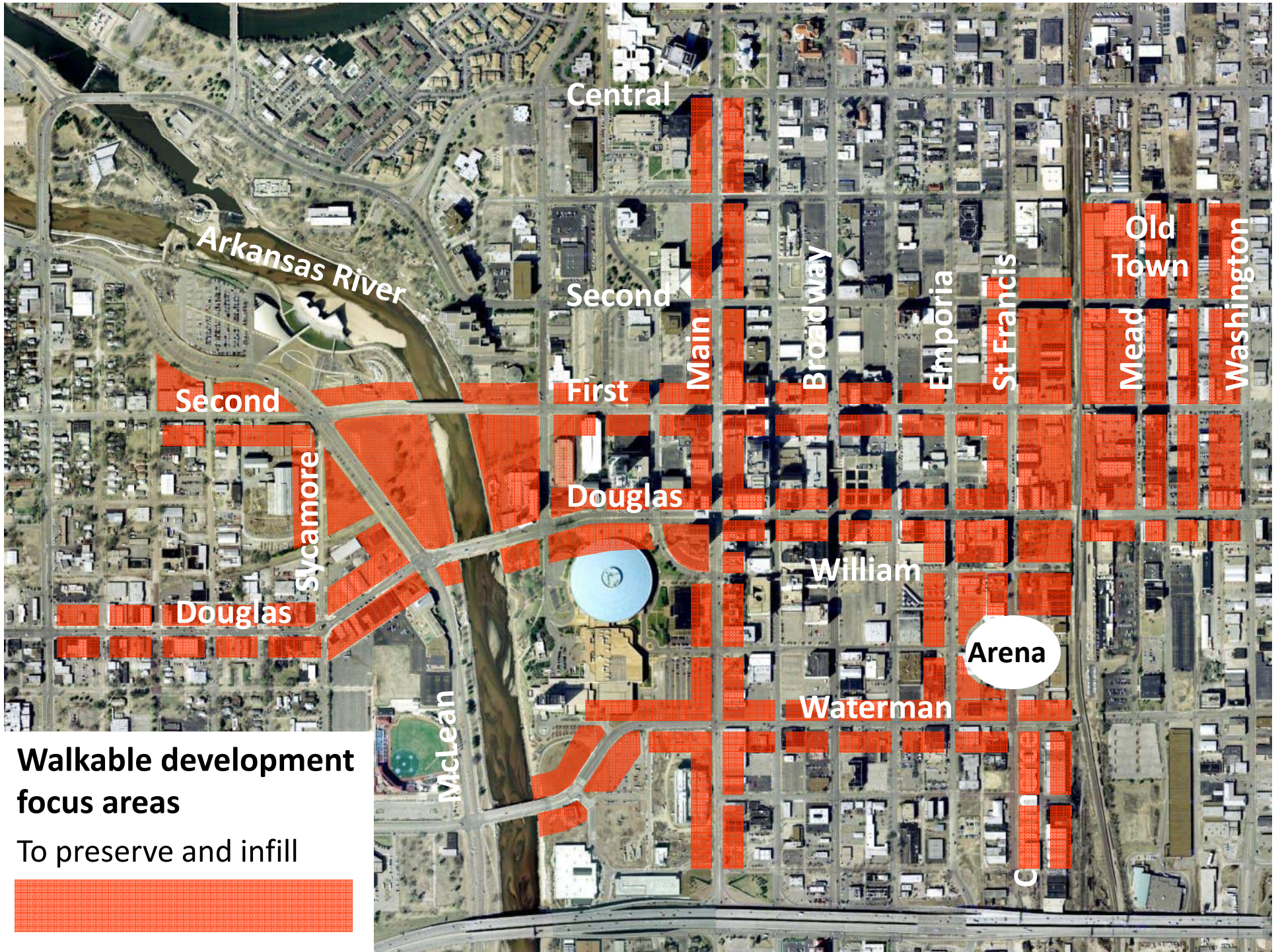
- Poor public access parking
- River/corridor could be cleaner, safer



Walkable focus areas

- Preserve and enhance existing elements that encourage walking:
 - Pedestrian-oriented retail
 - Historic buildings
 - Other pedestrian-oriented buildings
 - Parks
 - Street trees, quality streetscape
- Encourage infill and rehab of the gaps
- Supportive development throughout downtown
- Preliminary, pending:
 - Your charrette input
 - Assessment of feasibility, incentives as needed and effective





**Walkable development
focus areas**

To preserve and infill

